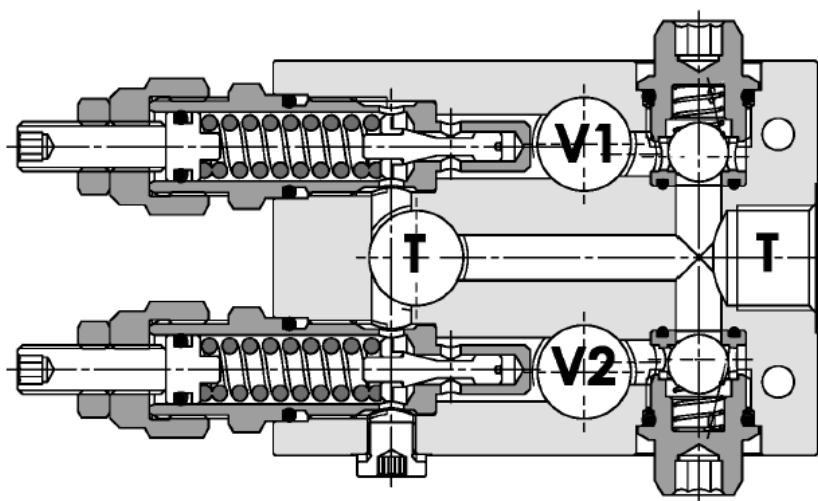
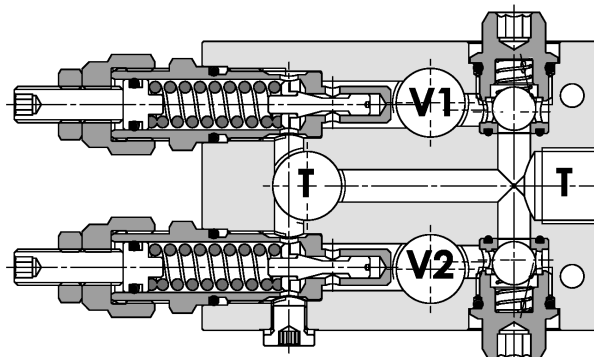
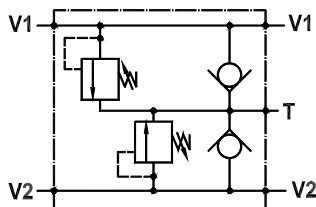


## **Cross-over kleppen met nazuig**



**Valvole di regolazione pressione doppie incrociate ad azione diretta, anticavitazione**  
**Dual cross direct acting relief valves line mounted version, anti-cavitation**

Rev.01-2010/02



**SPECIFICHE TECNICHE**

**Materiali:** cartucce in acciaio zincato, parti interne in acciaio trattato termicamente. Corpo in lega di alluminio.

**Portata:** 40 l/min

**Pressione max.:** 250 bar

**Regolazione pressione:** mediante vite

**Peso:** 1,050 Kg

**TECHNICAL SPECIFICATIONS**

**Materials:** cartridge in steel zinc plated, internal parts are in hardened steel. Body is in high strength aluminium alloy.

**Rated flow:** 40 l/min

**Max. pressure:** 250 bar

**Adjustment means:** leakproof screw

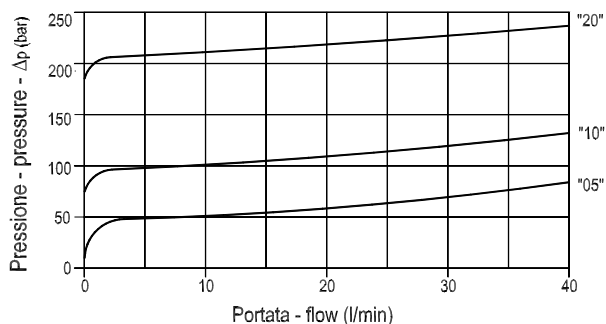
**Weight:** 1,050 Kg

**DIAGRAMMA PERDITE DI CARICO - PRESSURE DROP CURVES**

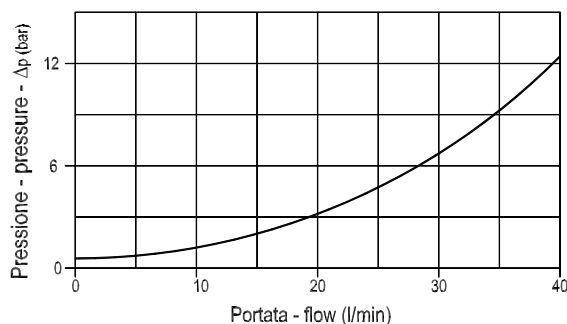
Viscosità olio 24 mm<sup>2</sup>/sec. (3,5 °E)  
 Temperatura 50 °C

Oil viscosity 24 mm<sup>2</sup>/sec. (3,5 °E)  
 Temperature 50 °C

V2 → T

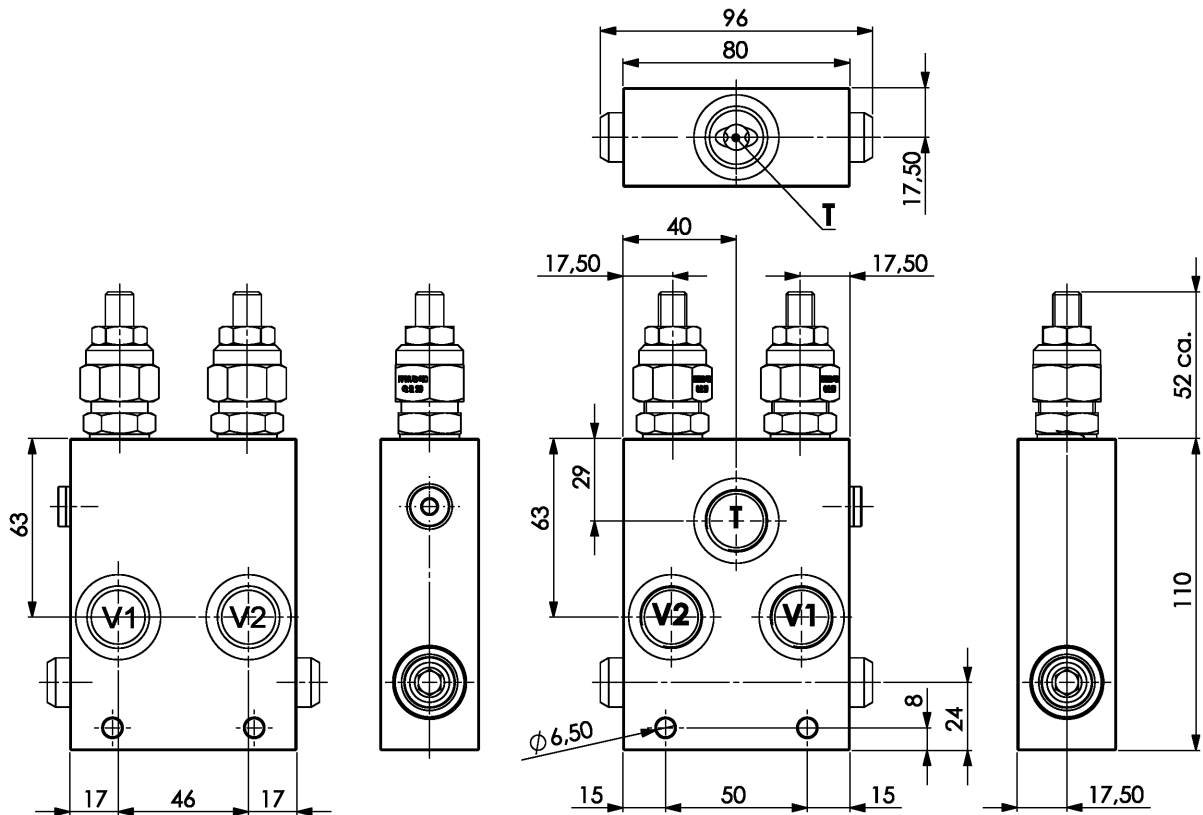


T → V2

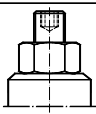
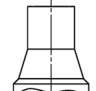


**Valvole di regolazione pressione doppie incrociate ad azione diretta, anticavitazione**  
**Dual cross direct acting relief valves line mounted version, anti-cavitation**

Rev.01-2010/02



MOLLE - SPRINGS				*
Codice Code	Campo taratura min.-max. bar Adjustable pressure range bar	Increment. press. bar/giro vite Pressure increase bar/turn	Taratura standard bar Standard setting bar	Colore Color
05	5 - 50	10	5	Bianco White
10	30 - 100	20	30	Giallo Yellow
20	50 - 220	40	50	Verde Green

REGOLAZIONI - ADJUSTEMENTS		*
Codice Code	Tipo - Type	
P	Vite esterna con esagono incassato Leakproof hex. socket screw	
Z	Cappello antimanomissione Tamperproof cap	

**ESEMPIO DI ORDINAZIONE - ORDERING CODE EXAMPLE**

**F P M** **D** **4 0** **I L** **A C** **P** **1 / 2** **A** **2 0**

\* P/Z:  
Regolazioni - Adjustements

\* "05" / "10" / "20":  
Campi di taratura pressione - Adjustable pressure range