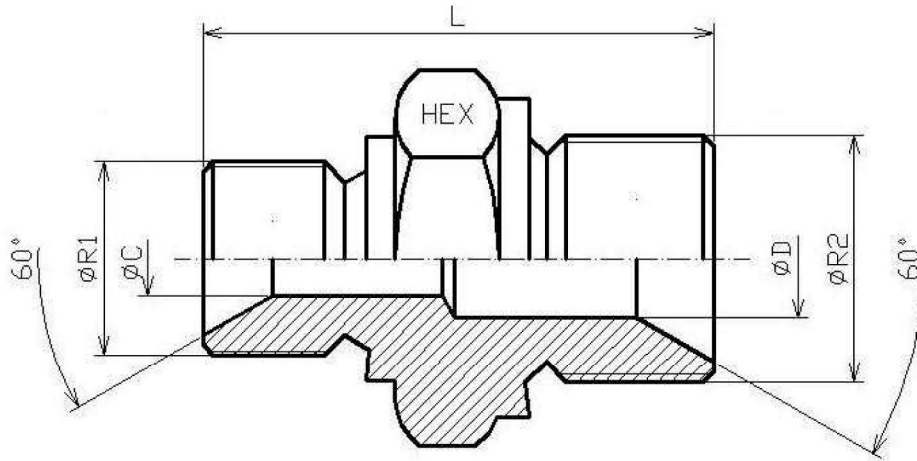


BSP Adaptors

Straight male adaptors

Reducer male adaptor BSP 60° - male BSP 60°

Stainless Steel AISI 316-L



Part nº	R1	R2	L	HEX 1	ØC	ØD
Z10200204	1/8" BSP	1/4" BSP	29	17	4	5
Z10200204H19	1/8" BSP	1/4" BSP	28	19	3,5	4,7
Z10200206	1/8" BSP	3/8" BSP	30,5	22	3,5	8
Z10200406	1/4" BSP	3/8" BSP	34,5	22	5	8
Z10200408	1/4" BSP	1/2" BSP	38,5	27	5	11
Z10200412	1/4" BSP	3/4" BSP	39,5	32	4,7	16,7
Z10200608	3/8" BSP	1/2" BSP	40	27	8	11
Z10200612	3/8" BSP	3/4" BSP	41	32	8	16
Z10200812	1/2" BSP	3/4" BSP	44	32	11	16
Z10200816	1/2" BSP	1" BSP	49,5	41	11	22
Z10201008	5/8" BSP	1/2" BSP	44	30	11	14
Z10201012	5/8" BSP	3/4" BSP	45	32	14	16
Z10201216	3/4" BSP	1" BSP	50,5	41	16	22
Z10201220	3/4" BSP	1"1/4" BSP	52,5	50	16	28
Z10201620	1" BSP	1"1/4" BSP	56	50	22	28
Z10201624	1" BSP	1"1/2" BSP	59	55	22	33
Z10202024	1"1/4" BSP	1"1/2" BSP	61	55	28	33
Z10202032	1"1/4" BSP	2" BSP	64	65	28	46
Z10202432	1"1/2" BSP	2" BSP	65,5	65	33	45
Z10202432H70	1"1/2" BSP	2" BSP	67,5	70	33,3	46