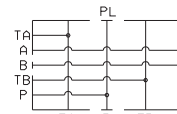
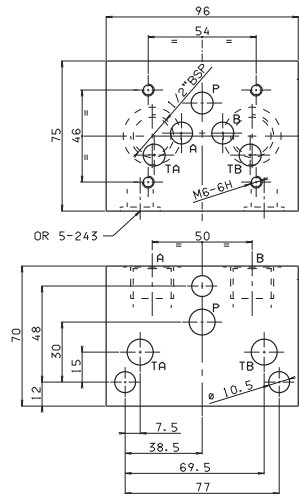


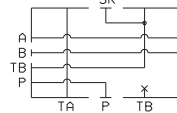
**BC.5.30/32**

- BC** Module base
- 5** CETOP 5/NG10 - 3 rods
- \*\*** **30** = 1/2" BSP connectors in parallel  
**31** = 3/4" BSP connectors in parallel  
**32** = 1/2" BSP connectors in series
- \*\*** **00** = No variant  
**AI** = A and B rear connector  
**AS** = A and B upper connectors
- 1** Serial No.

Weight: 3 Kg



BC.5.30...  
BC.5.31...



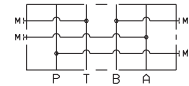
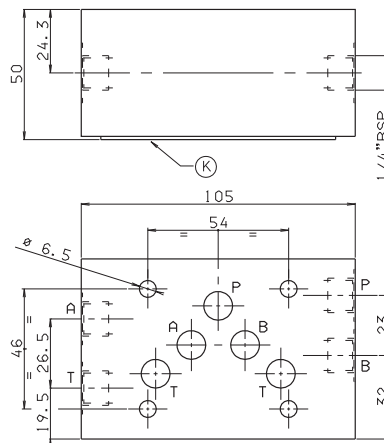
BC.5.32...

**BC.5.50 INTERMEDIATE MODULE FOR PRESSURE GAUGE**

- BC** Module base
- 5** CETOP 5/NG10
- 50** Intermediate module for pressure gauge connection at ports A/B/P/T
- 00** No variant
- 1** Serial No.

Weight: 2,3 Kg

**K** = plate OR (Q25.95.0002)



7

**BC.5.51 DOWEL PLATE FOR SOLENOID VALVE**

- BC** Module base
- 5** CETOP 5/NG10
- 51** Subplate for solenoid valve
- 00** No variant
- 1** Serial No.

Weight: 0,5 Kg

**K** = plate OR (Q25.95.0002)

CALIBRATED DIAPHRAGMS AVAILABLE	
d	M8x1x8
0.6	M89.10.0007
0.7	M89.10.0008
0.8	M89.10.0009
0.9	M89.10.0012
1	M89.10.0010
1.2	M89.10.0011
1.4	M89.10.0038
1.5	M89.10.0035
1.75	M89.10.0042
2	M89.10.0041
2.5	M89.10.0036

