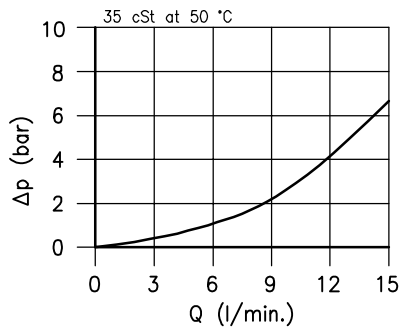
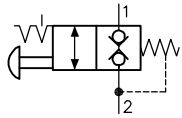


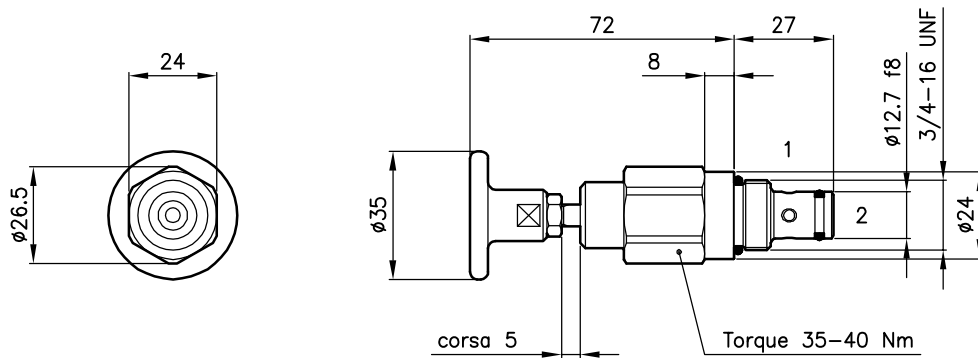
Technical features



Cavity (For dimensions see catalogue 17.001)	S 28/2
Max. flow (l/min.)	15
Max. pressure (bar)	315
Driving force (min.) (N)	35
Fluid viscosity range (cSt)	2.8 - 380
Fluid temperature range (°C)	-20 +80
Mass (kg)	0.140
Hydraulic fluid; mineral oil HM and HV	ISO 6074
Recommended filtration; 19/15 ISO 4466 (25 μ absolutes)	
Standard seals in Polyurethane and Buna N	

Dimensions

Pressure of chamber 2 influences the necessary force for valve's drive (35 N + 28 N every 10 bar in chamber 2).

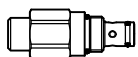


External parts with anticorrosive treatment.

Ordering informations

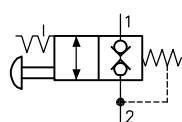
MCD 28/2202-PB

MCD 28 = Valve type



Circuit

2202 =



Driving type

PB = Push type detented



Codes:

MCD 28/2202-PB 22 011 165

External seals kit 90 620 113

ECD 28/2202 valves can be assembled on standard bodies 28-L0 series; for dimensions see catalogue 16.020