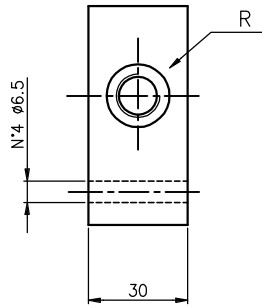
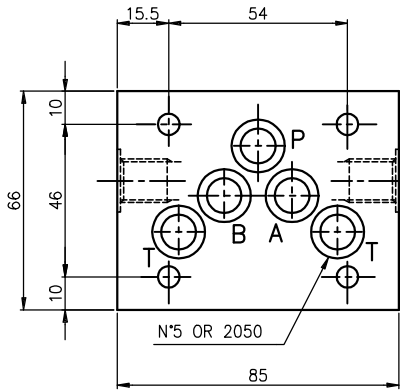
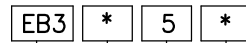


Sub plate for packing. Weight = 1 kg  
 Grundplatte fuer Verkettungen. Gewicht = 1 Kg  
 Set of 5 pcs. / Satz von 5 Stk.



Tipo Type	Utilizzi Sorties
0	A e B
3	Lato Côté B P e T Lato Côté A
6	P e P

Ordering code  
Bestell-Code



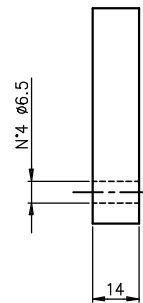
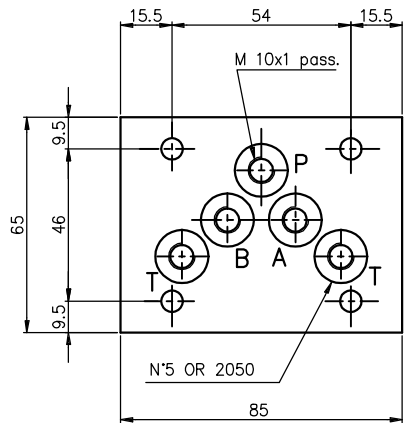
Sub plate for packing = B3  
 Grundplatte f. Verkett.

14 = R 1/4"G  
 38 = R 3/8"G

0 - 3 - 6 CETOP 5

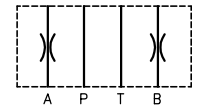
see table / sehe Tabelle

Subplate for packing with A-B-P-T threaded M10x1. Weight = 0.6 Kg  
 Verkettungsplatte mit A-B-P-T Gewindeanschlüssen M10x1. Gewicht = 0.6 Kg  
 Set of 10 pcs. / Satz von 10 Stk.

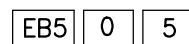


Example:  
Flow regulation on A and B

Beispiel:  
Drossel auf A und B



Ordering code  
Bestell-Code



EUROFLUID  
 subplate for packing = B5  
 with threaded M10x1  
 Grundplatte fuer Verkettungsplatte  
 mit Gewindeanschlüsse M10x1

CETOP 5

0 = version with A-B-P-T threaded  
 A-B-P-T Gewindeanschlüsse