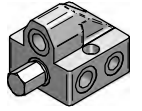
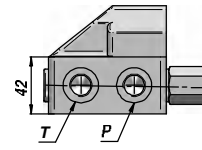
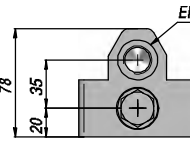
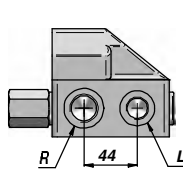
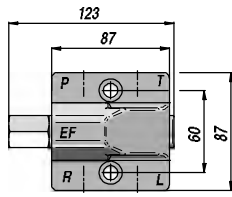
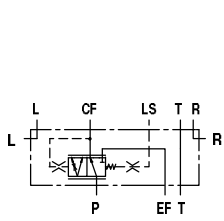


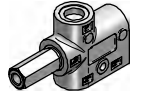
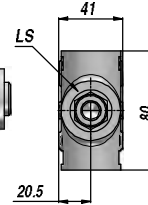
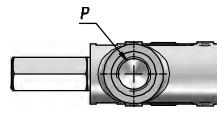
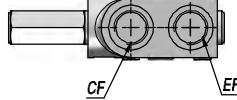
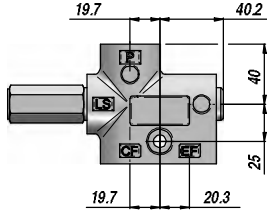
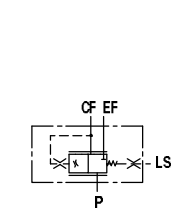
VALVOLA PRIORITARIA PER IDROGUIDA LOAD-SENSING
PRIORITY VALVE FOR LOAD-SENSING STEERING UNIT

VPRD

VPRTA



PRD - STATIC SIGNAL



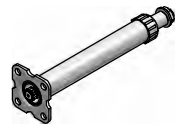
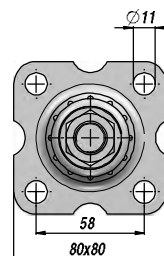
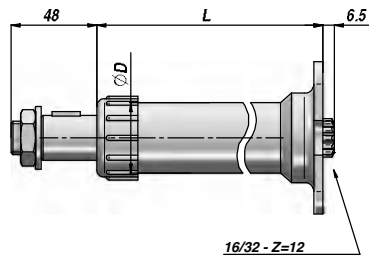
PRTA - STATIC SIGNAL

Codice Code	Tipo Type	Segnale Signal	Q MAX l/min	Molla Spring	P - EF BSP	T - R - L BSP	CF BSP	LS BSP	kg
VPRD0800 **	PRD 80/** (x HKUS.../5)	Static	80	4-7-10 bar	1/2"	3/8"			2,25
VPRDD080 **	PRD-D 80/** (x HKUS.../5)	Dynamic	80	4-7-10 bar	1/2"	3/8"			2,25
VPRTA080 **	PRTA 80/** (x HKUS.../5T)	Static	80	4-7-10 bar	1/2"		1/2"	1/4"	1,30
VPRTAD08 **	PRTA-D 80/** (x HKUS.../5T)	Dynamic	80	4-7-10 bar	1/2"		1/2"	1/4"	1,30

** = 04 - 07 - 10 bar

COLONNETTA PER IDROGUIDA
STEERING COLUMN

ACI



Codice Code	L	ØD	Cono Taper	kg
ACI0075000	75	38	Type 1 1:20 Ø23.2 M18x1.5	0,70
ACI0150000	165			0,97
ACI0200000	200			1,05
ACI0270000	270			1,25
ACI0350000	350			1,45
ACI0400000	400			1,55
ACI0450000	450			1,65
ACI0520000	520			1,92
ACI0600000	600			2,05
ACI0750000	775			2,45

