

Pressure control valves CETOP 5

Reducing / Sequencing valves AM 5 RP/SQ



Description

AM.5.RP. and AM.5.SQ. valves are piloted type pressure reducing and sequencing units, respectively, to ensure minimum pressure variation with changing flow rate. Normally supplied with internal piloting and external drainage, they are already provided with a hole on their front cover to allow external drainage.

The pressure at the drain is added to the pressure at port P regulated downstream of the valve. Three types

of springs allow adjustment within the range 5 to 320 bar.

Adjustment is by means of a grub screw or a plastic knob on the P or A port. The adjustment at port A is achieved by placing the drain at B so that it only works when the solenoid valve fitted above, switches from P to A and B to T placing the drain in the discharge position. Viceversa, with P to B and A to T, the drain is pressurized and the valve remains open.

Specifications

Max. operating pressure	320 bar
Setting ranges:	Spring 1 5 ÷ 40 bar
	Spring 2 15 ÷ 140 bar
	Spring 3 50 ÷ 320 bar
Max. flow	80 l/min
Hydraulic fluids	Mineral oils DIN 51525
Fluid viscosity	10 ÷ 500 mm ² /s
Fluid temperature	0°C ÷ 75°C
Ambient temperature	-25°C ÷ 60°C
Max. contamination level	class 10 in accordance with NAS 1638 with filter $\beta_{25} \geq 75$.
Mounting	Modular
Drainage at line T	0,4 ÷ 0,9 l/min
Recommended pressure (drainage)	max. 2 bar
Weight	3,5 Kg

Ordering code

AM

Modular valve

5

Size CETOP 5/NG10

RP = Pilot operated pressure reducing valve
SQ = Pilot operated pressure sequencing valve

Control on lines **P** (Sequencing valve)
Control on lines **P / A** (Reducing valve)
For lines A the setting pressure is limited to 200 bar

Drain connection:
E = External (for regulation at port P only)
I = Internal

Type of adjustment
M = Plastic knob
C = Grub screw

Setting ranges at ports A/B/P:
1 = 5 ÷ 40 bar (**white spring**)
2 = 15 ÷ 140 bar (**yellow spring**)
3 = 50 ÷ 320 bar (**green spring**)

Variants:
00 = No variant
V1 = Viton

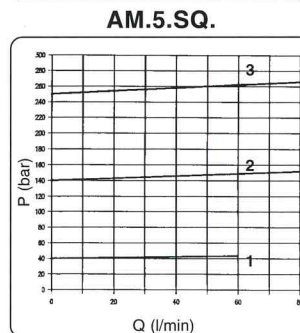
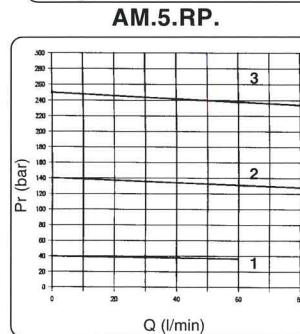
2

Serial No.

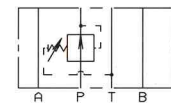
To change valves AM.5.RP/SQ.. from internal to external drainage it is necessary:

- to remove the port Y plug on the front cover
- disassemble the cover itself
- add on the valve body an S.T.E.I. M4X5 UNI 5929 screw
- assemble the cover again (see overall dimensions drawing).

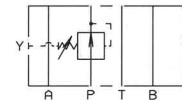
Pressure - Flow rate



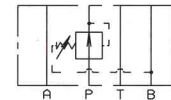
Hydraulic Symbols



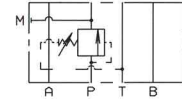
AM.5.RP.P.I...



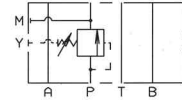
AM.5.RP.P.E...



AM.5.RP.A.I...



AM.5.SQ.P.I...



AM.5.SQ.P.E...

Overall dimensions

