



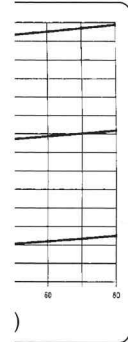
# Pressure control valves CETOP 5 Reducing / Sequencing valves AM 5 RP/SQ



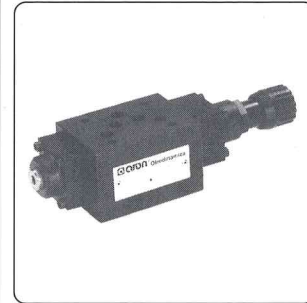
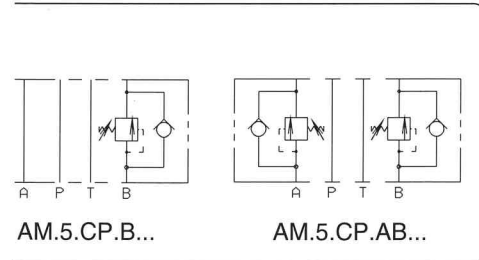
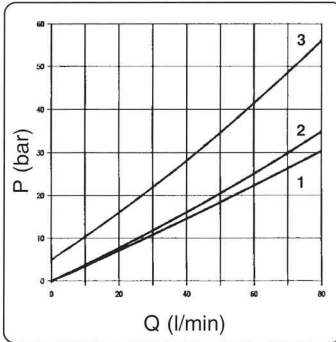
## Specifications

Operating pressure ranges:	Spring 1	max. 30 bar	250 bar
	Spring 2	max. 140 bar	
	Spring 3	max. 250 bar	
Flow rate		80 l/min	
Fluids	Mineral oils DIN 51525		
Viscosity	10 ÷ 500 mm <sup>2</sup> /s		
Temperature	0°C ÷ 75°C		
Temperature range	-25°C ÷ 60°C		
Contamination level	class 10 in accordance with NAS 1638 with filter $\beta_{25} \geq 75$ .		
Weight	Modular		
AM.5.CP.A / B...		5,3 Kg	
AM.5.CP.AB...		7,2 Kg	

## Flow rate



## Minimum setting pressure



## Description

AM.5.RP. and AM.5.SQ. valves are piloted type pressure reducing and sequencing units, respectively, to ensure minimum pressure variation with changing flow rate. Normally supplied with internal piloting and external drainage, they are already provided with a hole on their front cover to allow external drainage.

The pressure at the drain is added to the pressure at port P regulated downstream of the valve. Three types

of springs allow adjustment within the range 5 to 320 bar. Adjustment is by means of a grub screw or a plastic knob on the P or A port. The adjustment at port A is achieved by placing the drain at B so that it only works when the solenoid valve fitted above, switches from P to A and B to T placing the drain in the discharge position. Viceversa, with P to B and A to T, the drain is pressurized and the valve remains open.

## Ordering code

**AM**

Modular valve

**5**

Size CETOP 5/NG10

**\*\***

**RP** = Pilot operated pressure reducing valve  
**SQ** = Pilot operated pressure sequencing valve

**\***

Control on lines **P** (Sequencing valve)  
Control on lines **P / A** (Reducing valve)  
For lines **A** the setting pressure is limited to 200 bar

**\***

Drain connection:  
**E** = External (for regulation at port P only)  
**I** = Internal

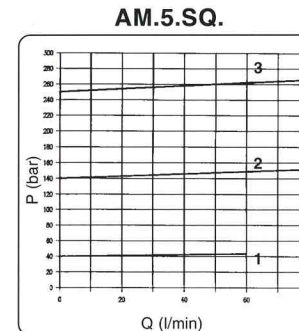
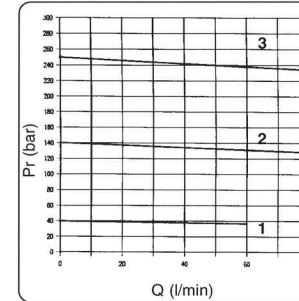
**\***

Type of adjustment  
**M** = Plastic knob  
**C** = Grub screw

**\***

Setting ranges at ports A/B/P:  
**1** = 5 ÷ 40 bar (**white spring**)  
**2** = 15 ÷ 140 bar (**yellow spring**)  
**3** = 50 ÷ 320 bar (**green spring**)

## Pressure - Flow rate



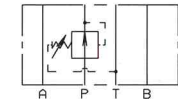
The fluid used is a mineral based oil with a viscosity of 45 mm<sup>2</sup>/s at 40° C. The tests have been carried out at with a fluid temperature of 40° C.

## Specifications

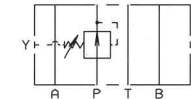
Max. operating pressure	320 bar		
Setting ranges:	Spring 1	5 ÷ 40 bar	
	Spring 2	15 ÷ 140 bar	
	Spring 3	50 ÷ 320 bar	
Max. flow	80 l/min		
Hydraulic fluids	Mineral oils DIN 51525		
Fluid viscosity	10 ÷ 500 mm <sup>2</sup> /s		
Fluid temperature	0°C ÷ 75°C		
Ambient temperature	-25°C ÷ 60°C		
Max. contamination level	class 10 in accordance with NAS 1638 with filter $\beta_{25} \geq 75$ .		
Mounting	Modular		
Drainage at line T	0,4 ÷ 0,9 l/min		
Recommended pressure (drainage)	max. 2 bar		
Weight	3,5 Kg		

## AM.5.RP.

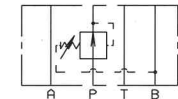
## Hydraulic Symbols



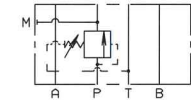
AM.5.RP.P.I...



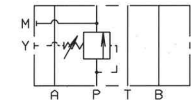
AM.5.RP.P.E...



AM.5.RP.A.I...



AM.5.SQ.P.I...



AM.5.SQ.P.E...