

Pressure control valves CETOP 5 Back pressure valve AM 5 CP



Description Back pressure valves type AM.5.CP. are direct acting damped maximum pressure in-line valves fitted with bypass non-return valves. They are obtainable within the adjustable range 2 to 250 bar. Adjustment is by means of a grub screw or a plastic knob, on ports A or B (single), or on AB (double). The cartridge is direct acting type CMP.20 (see page 154). These valves are especially used on vertically working cylinders, in cases where

sufficient extra pressure is available.

For the minimum permissible setting pressure depending on the spring, see the minimum pressure setting curve

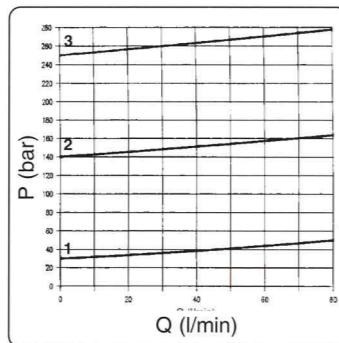
Ordering code

- AM** Modular valve
- 5** Size CETOP 5/NG10
- CP** Back pressure valve
- **** Control on lines: **A / B / AB**
- *** Type of adjustment
M = Plastic knob
C = Grub screw
- *** Setting ranges at ports A/B/P:
1 = max 30 bar (**white spring**)
2 = max 140 bar (**yellow spring**)
3 = max 250 bar (**green spring**)
- **** Variants:
00 = No variant
V1 = Viton
- 3** Serial No.

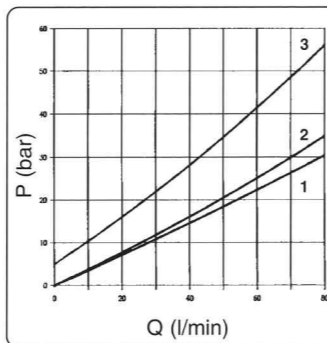
Specifications

| | |
|--------------------------|--|
| Max. operating pressure | 250 bar |
| Setting ranges: | Spring 1 max. 30 bar |
| | Spring 2 max. 140 bar |
| | Spring 3 max. 250 bar |
| Max. flow | 80 l/min |
| Hydraulic fluids | Mineral oils DIN 51525 |
| Fluid viscosity | 10 ÷ 500 mm ² /s |
| Fluid temperature | 0°C ÷ 75°C |
| Ambient temperature | -25°C ÷ 60°C |
| Max. contamination level | class 10 in accordance with NAS 1638 with filter β ₂₅ ≥ 75. |
| Mounting | Modular |
| Weight AM.5.CP.A / B... | 5,3 Kg |
| Weight AM.5.CP.AB... | 7,2 Kg |

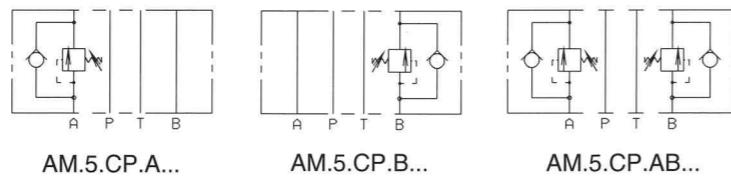
Pressure - Flow rate



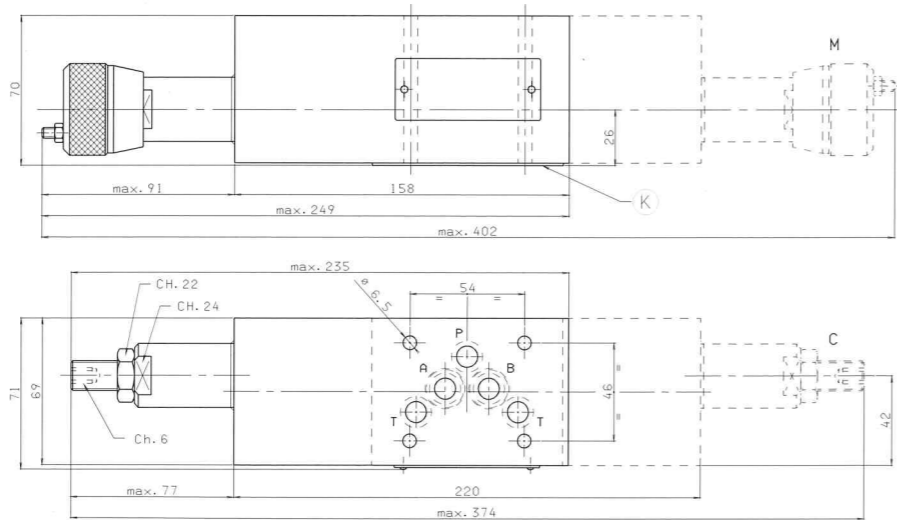
Minimum setting pressure



Hydraulic Symbols

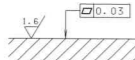


Overall dimensions



K = OR plate

Support plane specifications



Pressure control valves CETOP 5 Reducing / Sequencing valves AM 5 RP/SQ



Description

AM.5.RP. and AM.5.SQ. valves are piloted type pressure reducing and sequencing units, respectively, to ensure minimum pressure variation with changing flow rate. Normally supplied with internal piloting and external drainage, they are already provided with a hole on their front cover to allow external drainage.

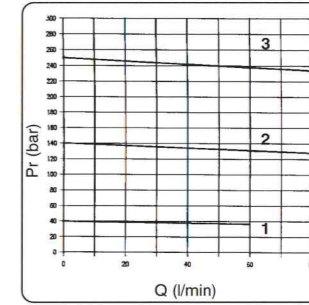
The pressure at the drain is added to the pressure at port P regulated downstream of the valve. Three types of springs allow adjustment within the range 5 to 320 bar.

Adjustment is by means of a grub screw or a plastic knob on the P or A port. The adjustment at port A is achieved by placing the drain at B so that it only works when the solenoid valve fitted above, switches from P to A and B to T placing the drain in the discharge position. Viceversa, with P to B and A to T, the drain is pressurized and the valve remains open.

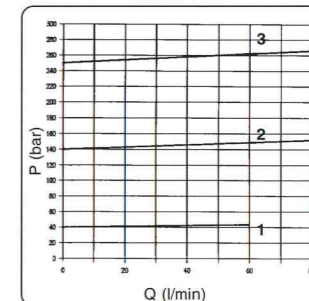
Specifications

| | |
|---------------------------------|--|
| Max. operating pressure | 320 bar |
| Setting ranges: | Spring 1 5 ÷ 40 bar |
| | Spring 2 15 ÷ 140 bar |
| | Spring 3 50 ÷ 320 bar |
| Max. flow | 80 l/min |
| Hydraulic fluids | Mineral oils DIN 51525 |
| Fluid viscosity | 10 ÷ 500 mm ² /s |
| Fluid temperature | 0°C ÷ 75°C |
| Ambient temperature | -25°C ÷ 60°C |
| Max. contamination level | class 10 in accordance with NAS 1638 with filter β ₂₅ ≥ 75. |
| Mounting | Modular |
| Drainage at line T | 0,4 ÷ 0,9 l/min |
| Recommended pressure (drainage) | max. 2 bar |
| Weight | 3,5 Kg |

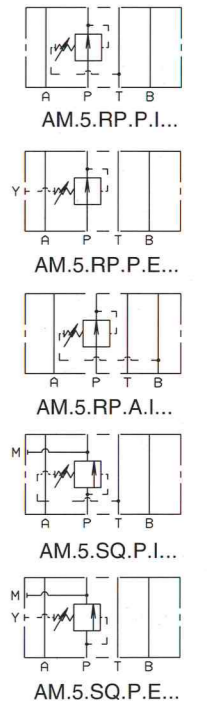
Pressure - Flow rate



AM.5.SQ.



Hydraulic Symbols

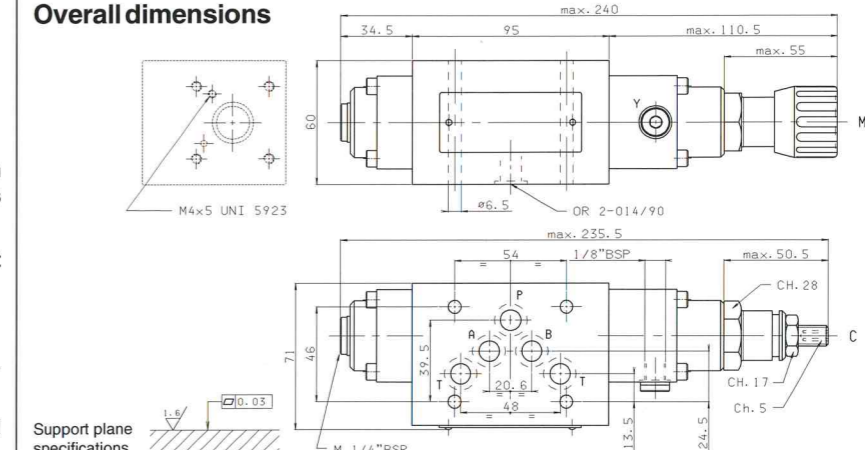


The fluid used is a mineral based oil with a viscosity of 45 mm²/s at 40° C. The tests have been carried out at with a fluid temperature of 40° C.

Ordering code

- AM** Modular valve
- 5** Size CETOP 5/NG10
- **** **RP** = Pilot operated pressure reducing valve
SQ = Pilot operated pressure sequencing valve
- *** Control on lines **P** (Sequencing valve)
Control on lines **P / A** (Reducing valve)
For lines **A** the setting pressure is limited to 200 bar
- *** Drain connection:
E = External (for regulation at port P only)
I = Internal
- *** Type of adjustment
M = Plastic knob
C = Grub screw
- *** Setting ranges at ports A/B/P:
1 = 5 ÷ 40 bar (**white spring**)
2 = 15 ÷ 140 bar (**yellow spring**)
3 = 50 ÷ 320 bar (**green spring**)
- **** Variants:
00 = No variant
V1 = Viton
- 2** Serial No.

Overall dimensions



To change valves AM.5.RP/SQ.. from internal to external drainage it is necessary:

- to remove the port Y plug on the front cover
- disassemble the cover itself
- add on the valve body an S.T.E.I. M4X5 UNI 5929 screw
- assemble the cover again (see overall dimensions drawing).

Support plane specifications

