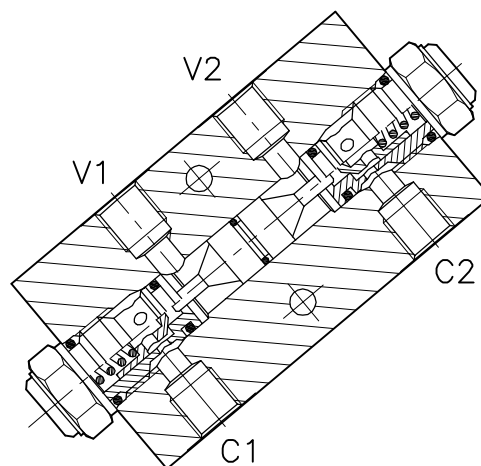
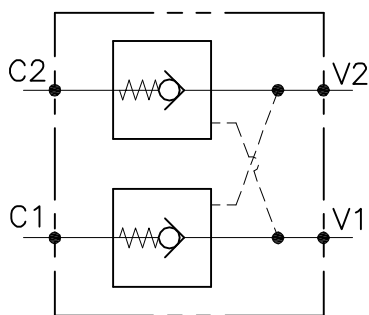


VNR-C-SO-DE-...-...



CARATTERISTICHE

Luce nominale min/max

Portata min/max

Pressione di lavoro max.

Rapporto di pilotaggio

Temperatura ambiente

Temperatura olio

Filtraggio consigliato

Peso

Peso

Vedi tabella/See table

Vedi tabella/See table

350 bar - 5075 PSI

4 : 1

-30°C + 50°C

-30°C + 80°C

50 micron

0.981 Kg. 3/8" GAS

0.957 Kg. 1/2" GAS

PERFORMANCE

Min/max rated size

Min/max flow-rate

Max working pressure

Pilot ratio

Room temperature

Oil temperature

Recommended filtration

Weight

Weight

8Bar Flusso libero

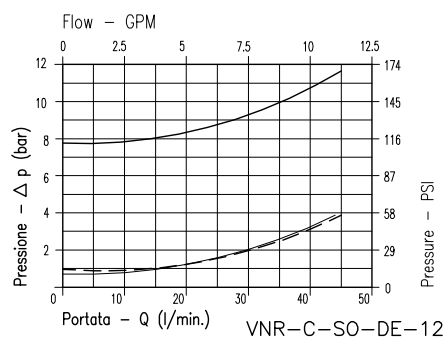
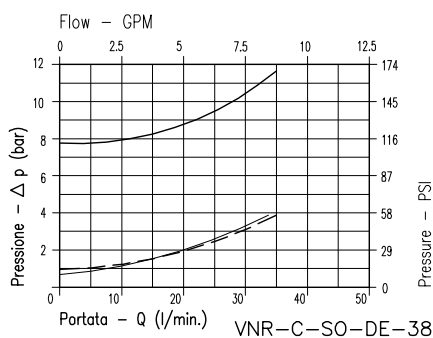
(free flow)

1Bar Flusso libero

(free flow)

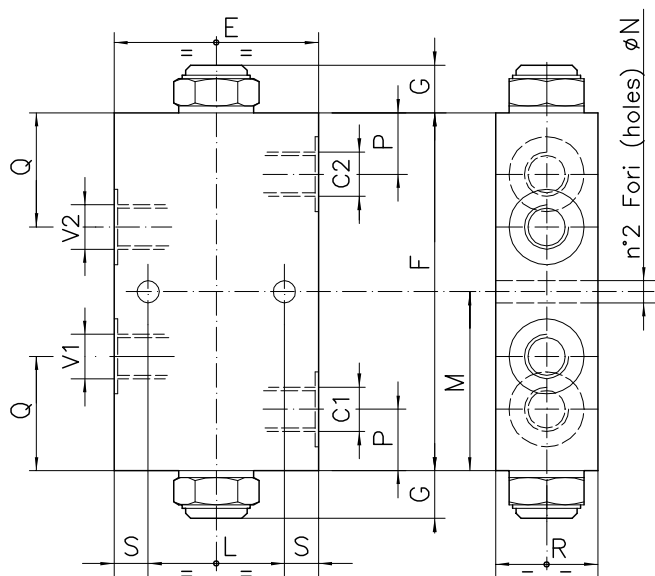
Flusso pilotato

(piloted flow)

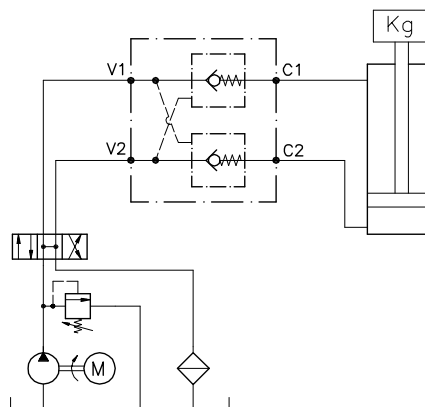


Viscosità olio 46 cSt a 50°C / Oil viscosity 46 cSt at 50°C

VALVOLA DI BLOCCO PILOTATA, A DOPPIO EFFETTO CON COLLETTORE IN LINEA
DOUBLE PILOT CHECK VALVE WITH IN LINE BODY



ESEMPIO TIPICO DI CIRCUITO
TYPICAL CIRCUIT EXAMPLE



DIMENSIONI
DIMENSIONS

NUMERO VALVOLA VALVE NUMBER	E	F	G	L	M	N	P	Q	R	S	Attacchi Port size V2-C2 V1-C1 GAS (BSPP)	Luce nominale Rated size DN	Portata max Max flow-rate l/min - GPM
049	70	110	18	40	55	8.5	20.5	38	35	15	3/8"	6	40-10.6
050	70	110	18	40	55	8.5	20.5	38	35	15	1/2"	8	60-15.9

CODICE DI ORDINAZIONE
HOW TO ORDER

