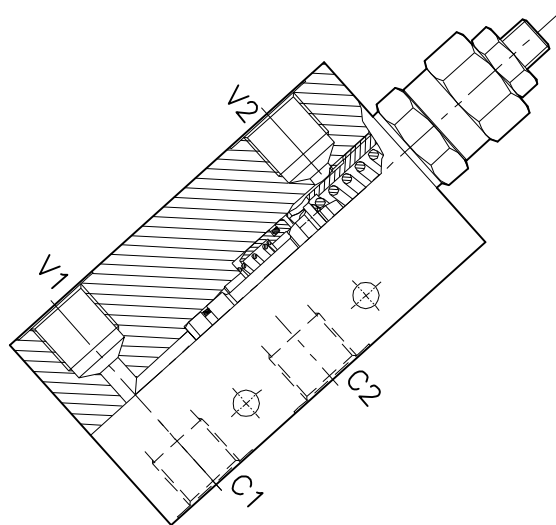
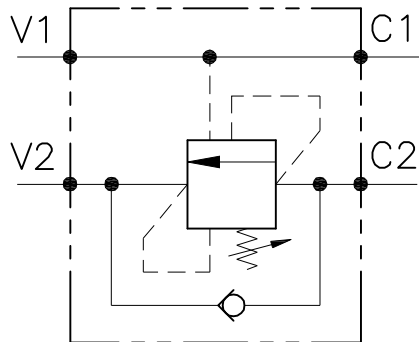


**VALVOLA BILANCIAMENTO, BLOCCO E CONTROLLO MOVIMENTO A SEMPLICE EFFETTO CON COLLETTORE IN LINEA, SERIE "WB"**  
 SINGLE COUNTERBALANCE VALVE WITH IN LINE BODY, "WB" SERIES

**LUEN**

HYDRAULIC VALVES AND  
 INTEGRATED COMPONENTS  
 s.r.l. ITALY

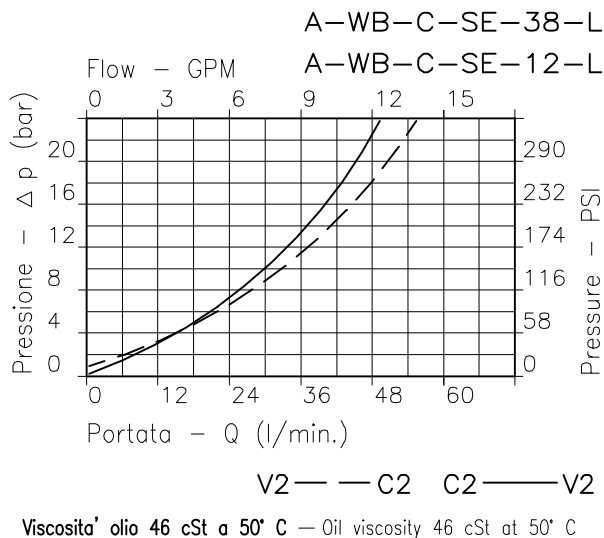
A-WB-C-SE-...-L-...-...



**CARATTERISTICHE - PERFORMANCES**

|   |           |                  |
|---|-----------|------------------|
| Luca nominale min/max<br>Min/max Rated size       | DN        | 4 / 10           |
| Portata min/max<br>Min/max flow-rate              | l/min-GPM | 1/60 - 0.26/15.9 |
| Pressione di lavoro max<br>Max working pressure   |           | 450 bar 6525 PSI |
| Pressione max di taratura<br>Max setting pressure |           | 350 bar 5075 PSI |
| Rapporto di pilotaggio<br>Pilot ratio             |           | 4.25 : 1         |
| Temperatura ambiente<br>Room temperature          | °C        | -30 +50          |
| Temperatura olio<br>Oil temperature               | °C        | -30 +80          |
| Filtraggio consigliato<br>Recommended Filtration  | micron    | 30               |
| Coppia di serraggio<br>Tightening torque          | Nm        | .                |
| Peso<br>Weight                                    | Kg        | .                |

**CARATTERISTICHE IDRAULICHE - HYDRAULIC PERFORMANCES**



**NOTE:**

La taratura deve essere 1,3 volte maggiore della pressione indotta dal carico.

Valve should be set at 1.3 times load induced pressure.

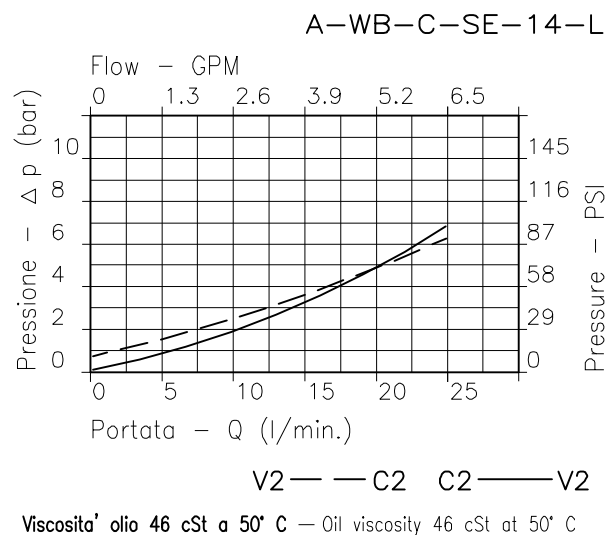
**ESEMPIO - EXAMPLE:**

Pressione di lavoro max :  $\frac{350 \text{ bar}}{1.3} = 270 \text{ bar}$   
 Max working pressure :

Fornitura standard valvola: corpo in acciaio.  
 A richiesta corpo in alluminio.

Steel body valves as standard, aluminium body on request.

**CARATTERISTICHE IDRAULICHE - HYDRAULIC PERFORMANCES**



**DIMENSIONI, INGOMBRI, CODICI DI ORDINAZIONE**  
 OVERALL DIMENSIONS AND ORDERING CODE



**HYDRAULIC VALVES AND INTEGRATED COMPONENTS**  
 s.r.l. ITALY

**A-WB-C-SE-...-L-...**

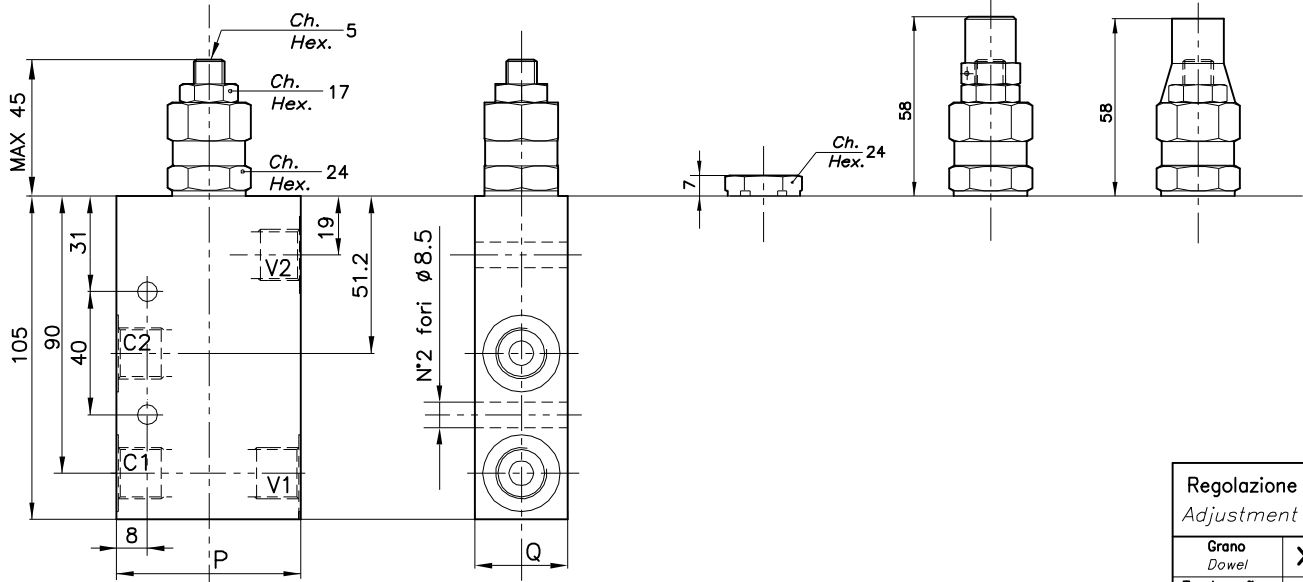
REGOLAZIONE  
 ADJUSTMENT

Grano  
 Dowel  
**(X)**

Taratura fissa  
 Fixed setting  
**(Z)**

Piombata  
 Sealed  
**(H)**

Piombata  
 Sealed  
**(K)**



|  |  |
|--|--|
| <b>Campo taratura 30 ÷ 220 bar (Colore verde)</b><br>Setting range 30 ÷ 220 bar (Colour green) | <b>Campo taratura 60 ÷ 350 bar (Colore giallo)</b><br>Setting range 60 ÷ 350 bar (Colour yellow) |
|--|--|

| SIGLA VALVOLA<br>VALVE CODE | Taratura standard (Q=5 l/1')<br>Std. bar setting (mode at 5 l/1') |      | Incr. press. bar giro/vite<br>Pressure rise turn of screw |       | P  | Q  | Attacchi<br>Port size<br>V2-C2<br>V1-C1<br>GAS (BSPP) | Luce nominale<br>Rated size<br>DN | Portata max<br>Max flow-rate<br>l/min-GPM |
|-----------------------------|---|------|---|-------|----|----|---|-----------------------------------|---|
|                             | 210 bar   | (56) | 350 bar   | (138) |    |    |   |                                   |   |
| A-WB-C-SE-14-L-*            | 332   |      | 331   |       | 60 | 30 | 1/4"  | 6                                 | 20-5                                      |
| A-WB-C-SE-38-L-*            | 328   |      | 327   |       |    |    | 3/8"  | 8                                 | 40-10                                     |
| A-WB-C-SE-12-L-*            | 330   |      | 329   |       | 70 | 35 | 1/2"  | 10                                | 60-15                                     |

| Regolazione<br>Adjustment *     |   |
|---------------------------------|---|
| Grano<br>Dowel                  | X |
| Taratura fissa<br>Fixed setting | Z |
| Piombata<br>Sealed              | H |
| Piombata<br>Sealed              | K |

0 0 1 | 0 0  
 CODICE ORDINAZIONE  
 ORDERING CODE

**ESEMPIO TIPICO DI CIRCUITO**  
 TYPICAL CIRCUIT EXAMPLE

