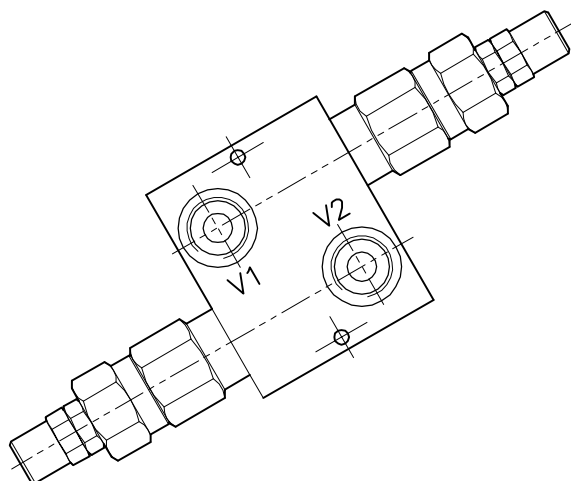
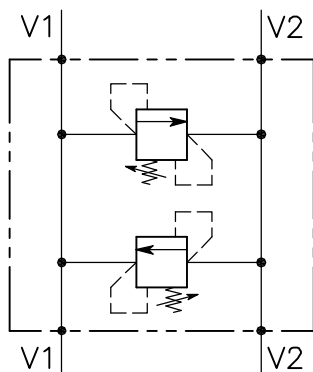


# VMP-DI-...-...-L



## CARATTERISTICHE

Luce nominale min/max

Portata min/max

Pressione di lavoro max.

Pressione max. di taratura

Temperatura ambiente

Temperatura olio

Filtraggio consigliato

Coppia di serraggio

**DN 8/10**

**Vedi Tab. / See Tab.**

**350 bar - 5075 PSI**

**350 bar - 5075 PSI**

**-30°C + 50°C**

**-30°C + 80°C**

**30 micron**

**70÷85 Nm**

## PERFORMANCE

Min/max rated size

Min/max flow-rate

Max working pressure

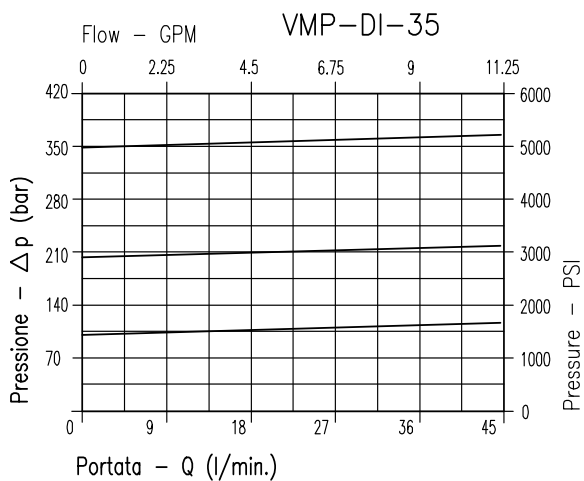
Max setting pressure

Room temperature

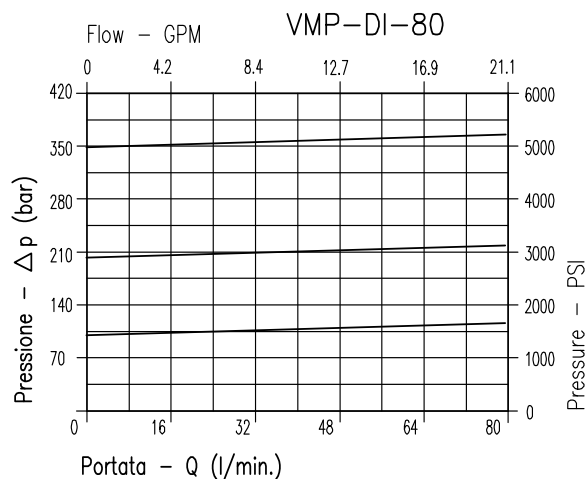
Oil temperature

Recommended filtration

Tightening torque

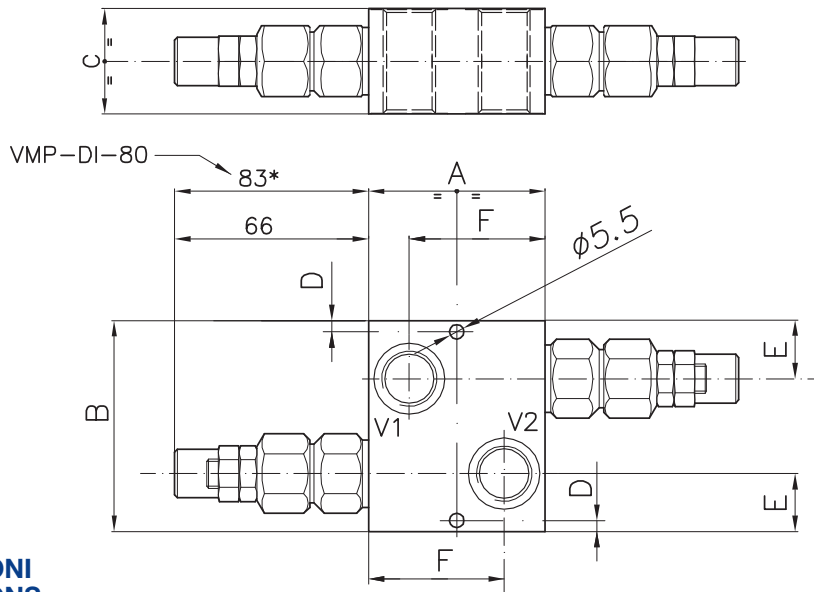


**Viscosità olio 46 cSt a 50°C**  
**Oil viscosity 46 cSt at 50°C**



**Viscosità olio 46 cSt a 50°C**  
**Oil viscosity 46 cSt at 50°C**

**VALVOLA DI MASSIMA PRESSIONE A DOPPIO EFFETTO A CARTUCCIA AD AZIONE DIRETTA CON OTTURATORE CONICO E COLLETTORE IN LINEA**  
**CARTRIDGE RELIEF DIRECT ACTING POPPET TYPE VALVE WITH IN LINE BODY**



**DIMENSIONI**  
**DIMENSIONS**

Campo taratura Setting range			A	B	C	D	E	F	Attacchi Port size V1-V2 GAS (BSPP)	Portata max Max flow-rate
051	281	282	80	60	40	5.5	18	64	3/8"	40 lt/min
052	283	284							1/2"	
Campo taratura Setting range			A	B	C	D	E	F	Attacchi Port size V1-V2 GAS (BSPP)	Portata max Max flow-rate
286	287	288	100	80	50	6	20	60	3/4"	80 lt/min

**CODICE DI ORDINAZIONE**  
**HOW TO ORDER**

Campo taratura / Setting range					
051		281		282	
052		283		284	
Campo taratura 5÷100 bar (molla colore blu)		Campo taratura 10÷210 bar (molla colore verde)		Campo taratura 20÷350 bar (molla colore giallo)	
Setting range 5÷100 bar (blue spring)		Setting range 10÷210 bar (green spring)		Setting range 20÷350 bar (yellow spring)	
Taratura standard (Q=5 l/1')	Incr. press. - bar giro/vite	Taratura standard (Q=5 l/1')	Incr. press. - bar giro/vite	Taratura standard (Q=5 l/1')	Incr. press. - bar giro/vite
Std. bar setting (Q=5 l/1')	Pressure rise - turn of screw	Std. bar setting (Q=5 l/1')	Pressure rise - turn of screw	Std. bar setting (Q=5 l/1')	Pressure rise - turn of screw
80 bar	(--)	180 bar	(--)	320	(--)

002 051 0 X 0

Campo taratura / Setting range					
286		287		288	
Campo taratura 10÷100 bar (molla colore verde)		Campo taratura 25÷250 bar (molla colore giallo)		Campo taratura 40÷350 bar (molla colore rosso)	
Setting range 10÷100 bar (colour green spring)		Setting range 25÷250 bar (colour yellow spring)		Setting range 40÷350 bar (colour red spring)	
Taratura standard (Q=5 l/1')	Incr. press. - bar giro/vite	Taratura standard (Q=5 l/1')	Incr. press. - bar giro/vite	Taratura standard (Q=5 l/1')	Incr. press. - bar giro/vite
Std. bar setting (Q=5 l/1')	Pressure rise - turn of screw	Std. bar setting (Q=5 l/1')	Pressure rise - turn of screw	Std. bar setting (Q=5 l/1')	Pressure rise - turn of screw
80 bar	(--)	210 bar	(--)	320 bar	(--)

Collettore in alluminio  
 Aluminum manifold