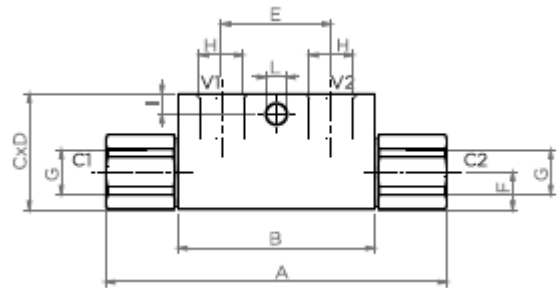
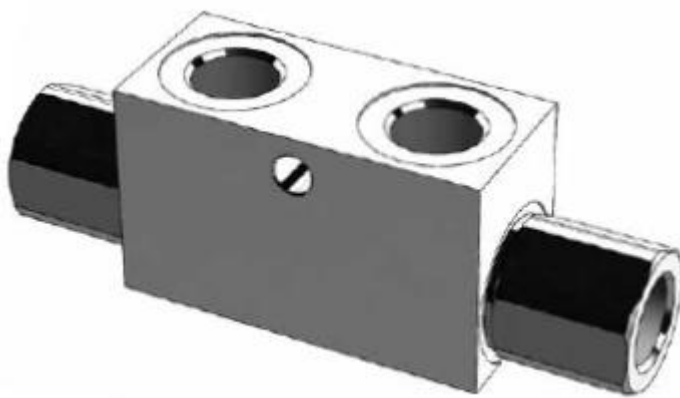
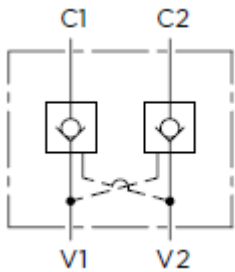


CC.030550 = 01

CC.030552 = 01

CC.030570 = 15



CARATTERISTICHE - HYDRAULICS FEATURES

| | | |
|---|-------|-------|
| Grandezza Size | 01 | 15 |
| Press. max Max pressure (bar) | 350 | 350 |
| Portata max Max flow (l/min) | 25 | 30 |
| Rapporto d'apertura Pilot ratio | 1:4.6 | 1:4.6 |
| Pressione d'apertura Cracking pressure (bar) | 4 | 4 |

Materials:
Zinc plated steel body,
hardened steel inner parts.

DIMENSIONI E PESI - EXTERNAL DIMENSIONS AND WEIGHTS

| Dimensione Dimension | A | B | C | D | E | F | G BSPP | H BSPP | I | L | Peso Weight (Kg) |
|-------------------------|-----|----|----|----|----|----|--------|--------|---|---|---------------------|
| 01 | 117 | 68 | 40 | 30 | 38 | 13 | 1/4 | 1/4 | 7 | 7 | 0.67 |
| 15 | 117 | 68 | 40 | 30 | 38 | 13 | 3/8 | 3/8 | 7 | 7 | 0.63 |