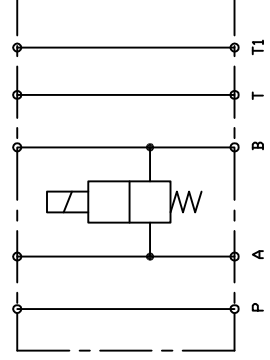


'D'-ringkamer 15,8x1,3
 'D'-ring = 12,42x1,78

- A = 10 mm
- B = 10 mm
- P = 10 mm
- T = 11 mm
- T1 = 11 mm

CETOP 5/NG 10
 ALL FACES Ra3,2 OR BETTER
 ALUMINIUM 7020



FIN037

