

MODULO PER ELETTROVALVOLA CETOP 2143 (luce ø6) CON VALVOLE DI RITEGNO PILOTATE AD OTTURATORE CONICO GUIDATO
Modular block with poppet type P.O. check valves able to accept CETOP 3 (2143) configuration valves

N118 (coll. in parallelo / parallel circuit)

N122 (coll. in parallelo / parallel circuit)

N123 (coll. in parallelo / parallel circuit)

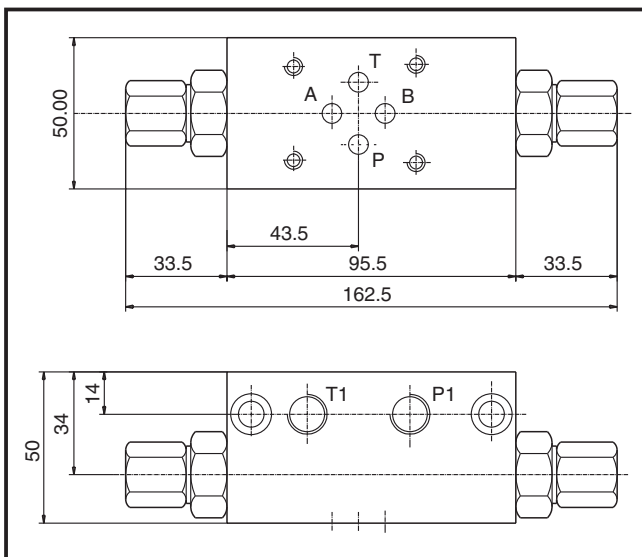
DENOMINAZIONE VALVOLA
Valve denomination

CODICE ORDINAZIONE
Ordering code

G3.861.18.X.Y.Z.

G3.861.22.X.Y.Z.

G3.861.23.X.Y.Z.



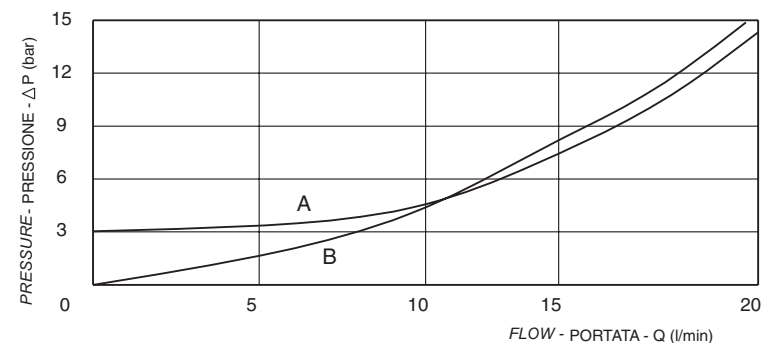
Modulo per elettrovalvola CETOP 2.1-4-3 con valvole unidirezionali a sbloccaggio oleodinamico.

- Filtraggio consigliato: 50 micron o inferiore
- Trafilamento: nullo
- Possibilità di montare OR sul pistone di pilotaggio

A selection of modular block with P.O. check valves able to accept block CETOP 3 (2143) electrovalves.

In order to replace the check valves you must use a special key available from OIL SYSTEM.

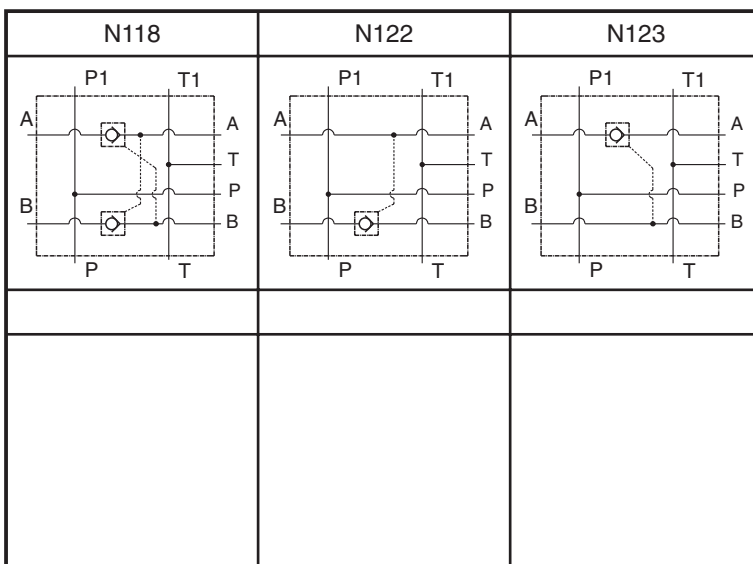
- Each block includes 4 OR 108 gaskets.
- Leakage free
- Suggested filtration: 50 micron nominal or better
- Possibility to have an OR gasket on the piloting piston
- Do not use this block when you have high counter pressure on the "T" line.



A = Caduta di pressione in portata libera / Loss of pressure with free flow
 B = Caduta di pressione con apertura pilotata / Loss of pressure with cracking piloting pressure

Rapporto di pilotaggio
Pilot ratio

4 : 1



X	Guarnizione sul pistone di pilotaggio O-ring on pilot piston
A	Senza guarnizione / no O-ring
B	Con guarnizione / with O-ring

Z	Attacchi / Port Size			
	N118		N122 - N123	
	A-B	P1-T1	A-B	P1-T1
1			1/4" BSPP	1/4" BSPP
2	3/8" BSPP	1/4" BSPP	3/8" BSPP	1/4" BSPP
3	1/4" BSPP	1/4" BSPP		

Y	Molle / Springs
	Inizio apertura (bar) / Cracking pressure (bar)
0	2

pressione di lavoro max.
max working pressure

300 bar

portata max.
max flow

20 l/min