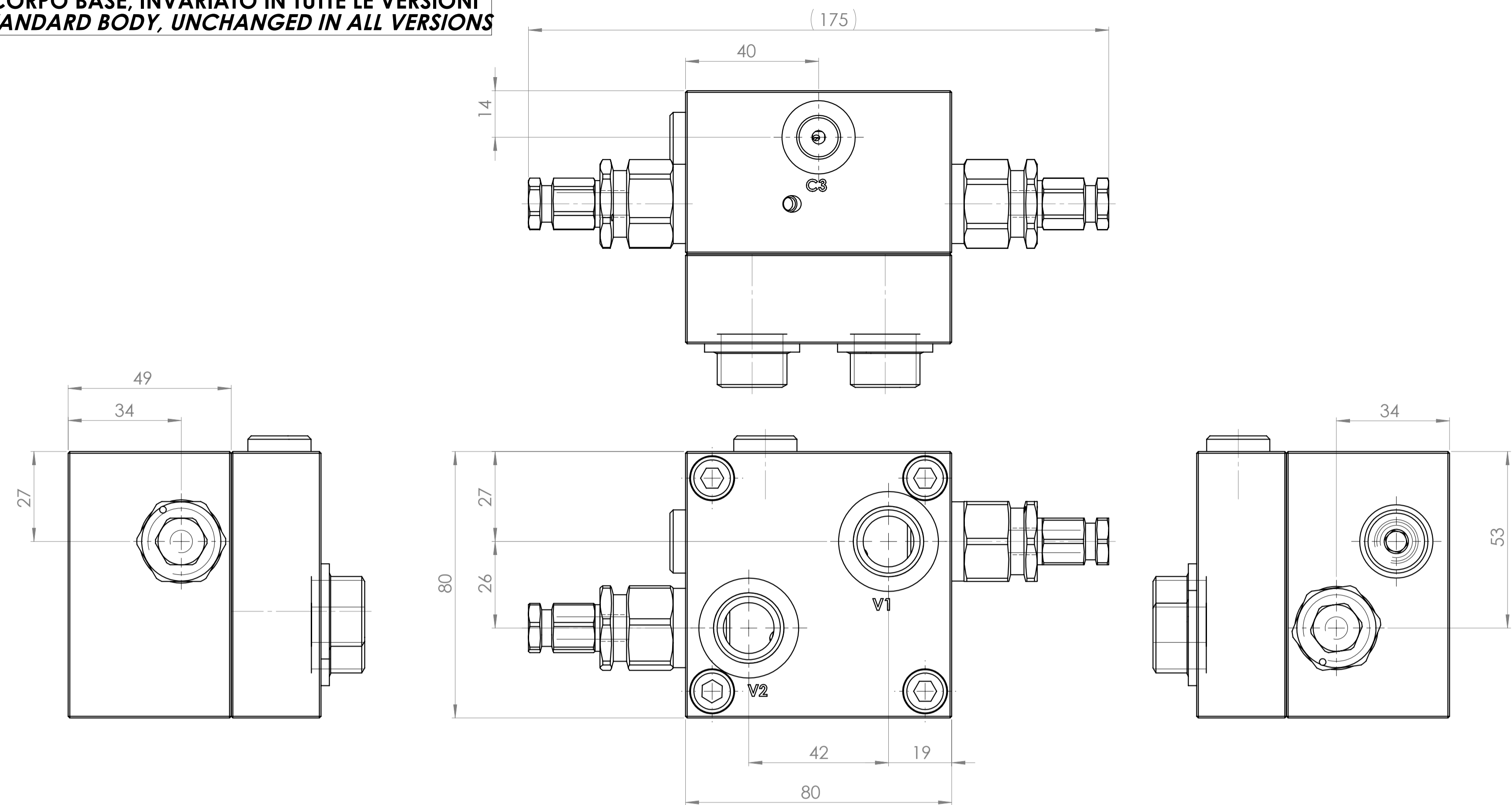
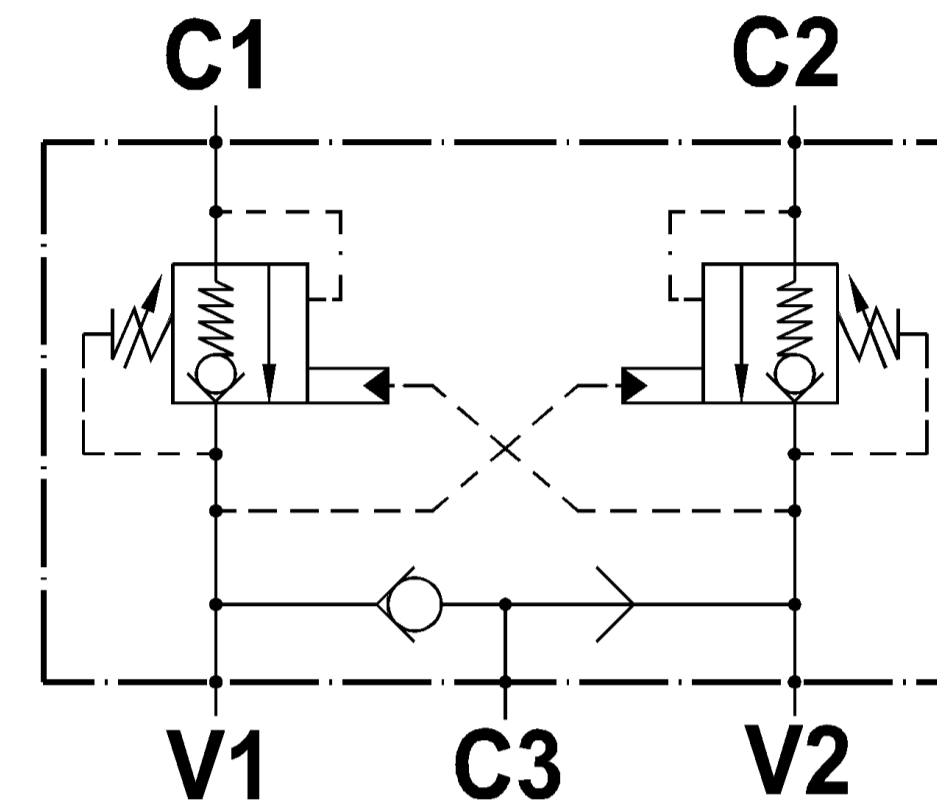


**CORPO BASE, INVARIATO IN TUTTE LE VERSIONI
STANDARD BODY, UNCHANGED IN ALL VERSIONS**



**SCHEMA IDRAULICO
HYDRAULIC SCHEME**



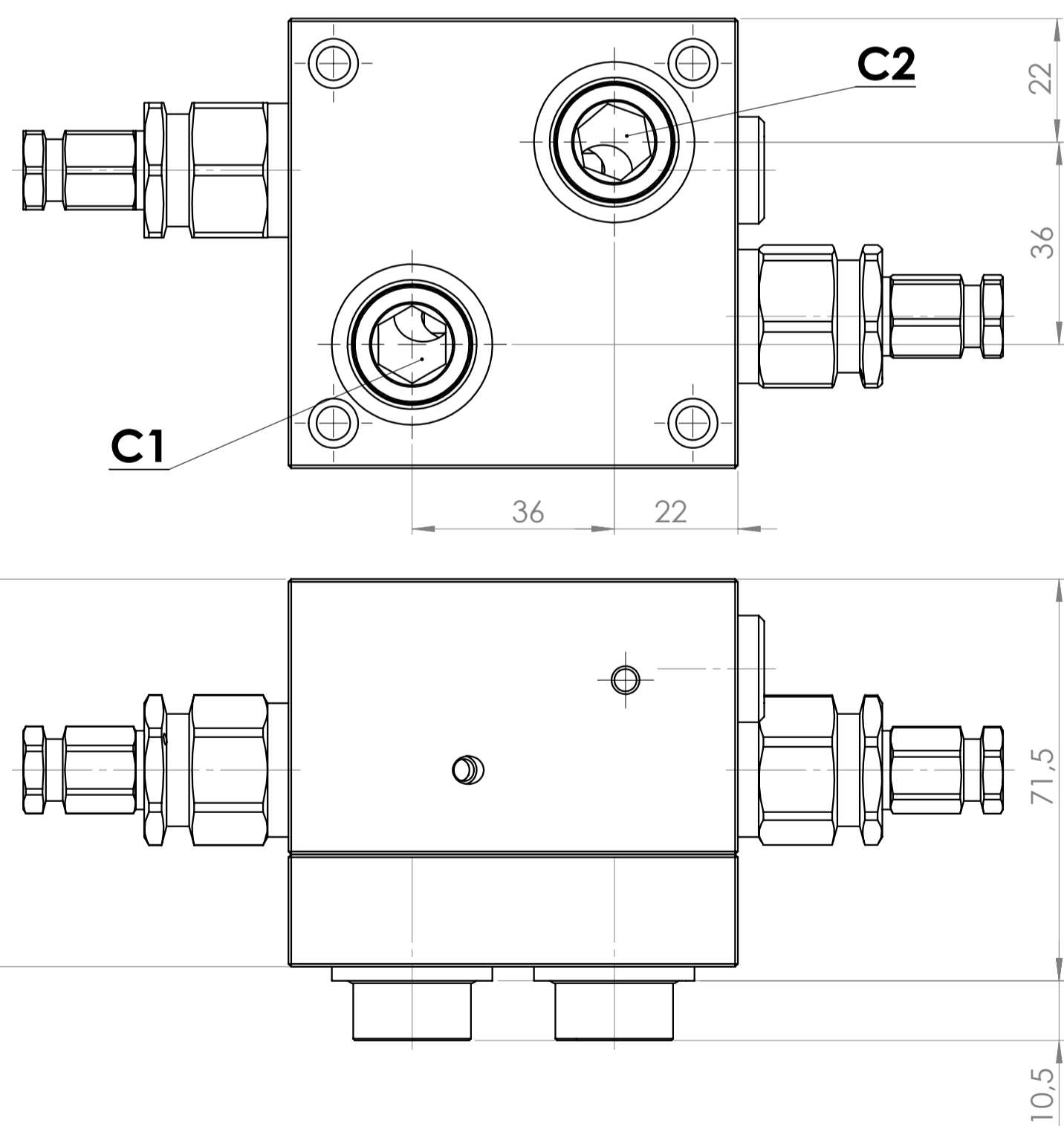
- SPECIFICHE TECNICHE**
- CORPO IN ALLUMINIO / ACCIAIO ZINCATO;
 - COMPONENTI INTERNI IN ACCIAIO;
 - PORTATA MAX.: 60 L/min;
 - PRESSIONE MAX.: 250 BAR / 350 BAR;
 - CAMPI REGOLAZ. PRESSIONE: 20 (60-220 BAR)
35 (150-350 BAR)
 - RAPP. PILOTAGGIO: 4,25:1(STD) 8:1(SU RICHIESTA);
 - REGOLAZ. PRESSIONE: MEDIANTE VITE;
 - V1, V2, C1, C2: 1/2" BSP;
 - C3: 1/4" BSP

TECHNICAL FEATURES

- **BODY MATERIAL: ALUMINIUM / ZINC PLATED STEEL;**
- **STEEL INTERNAL COMPONENTS;**
- **MAX. FLOW: 60 L/min;**
- **MAX. PRESSURE: 250 BAR / 350 BAR;**
- **OVERCENTER SETTING: 20 (60-220 BAR)
35 (150-350 BAR)**
- **PILOT RATIO: 4,25:1(STD) 8:1(ON REQUEST);**
- **ADJUSTMENT MEANS: LEAKPROOF SCREW;**
- **V1, V2, C1, C2: 1/2" BSP;**
- **C3: 1/4" BSP**

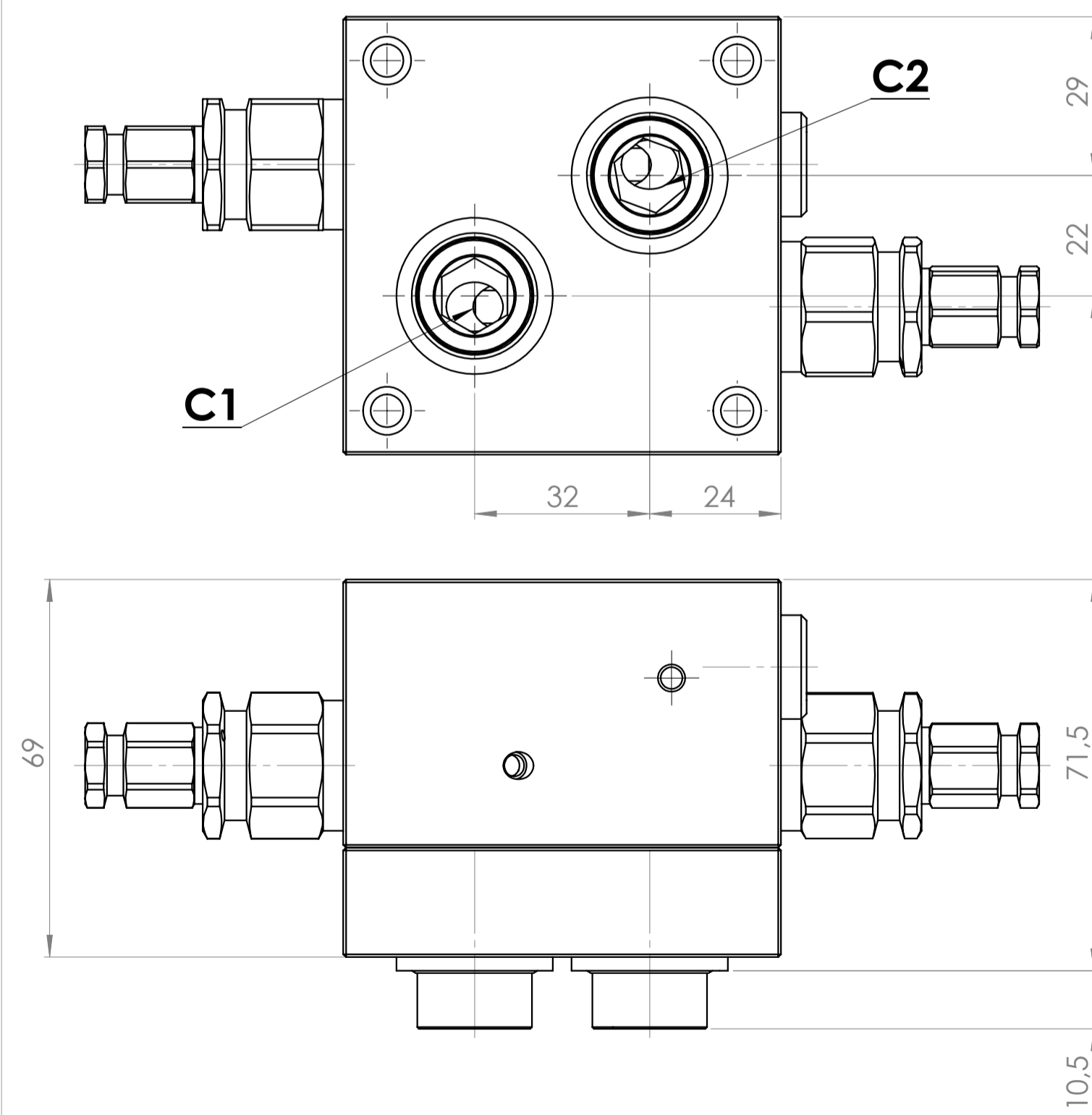
**FLANGIA MOTORI DANFOSS OMP/OMR/OMH
FLANGE DANFOSS MOTORS OMP/OMR/OMH**

**FPO 50 DV-D2-1/2-U-20/35-*
FP-09F-0005**



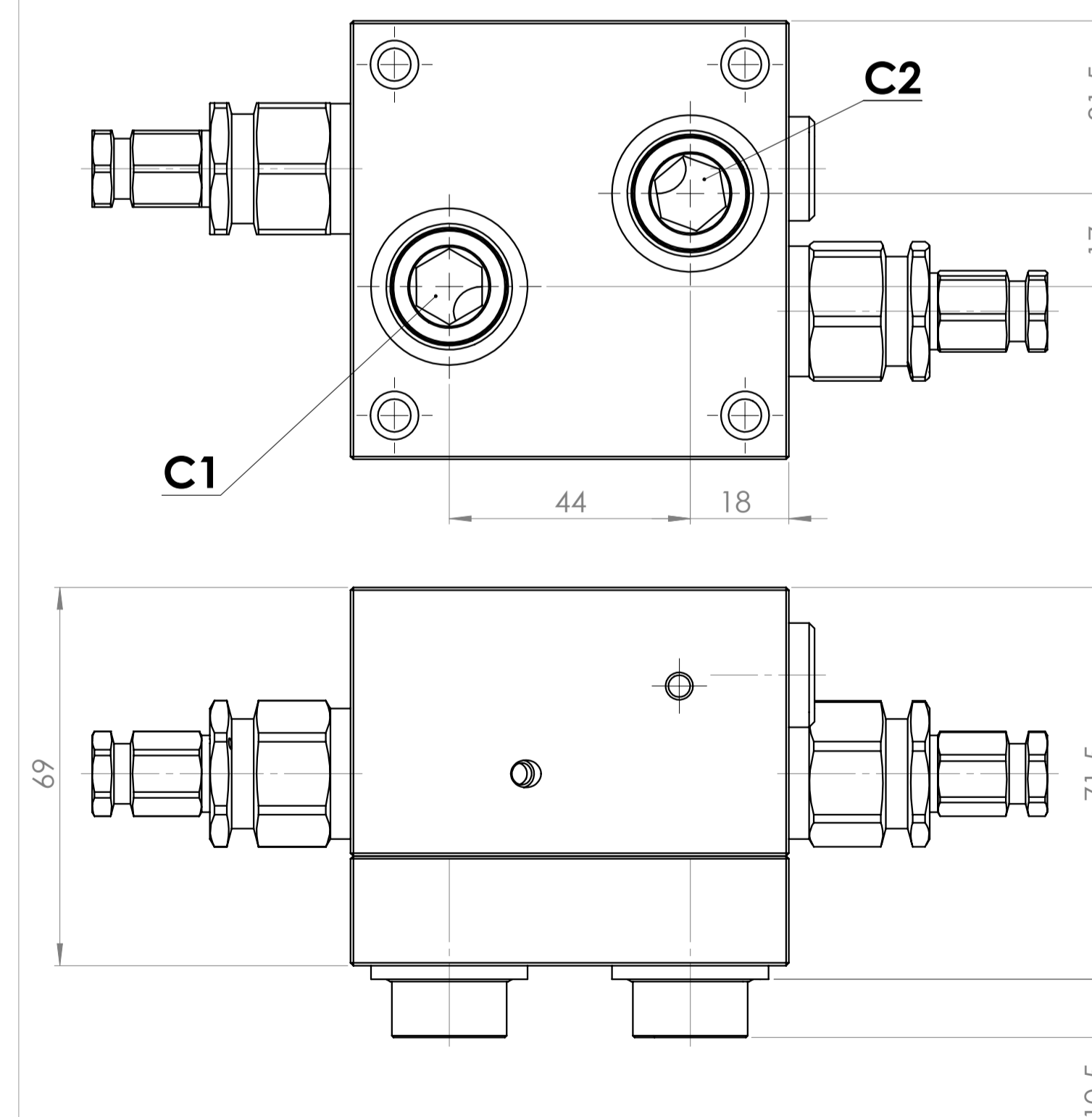
**FLANGIA MOTORI DANFOSS OMS
FLANGE DANFOSS MOTORS OMS**

**FPO 50 DV-D3-1/2-U-20/35-*
FP-09F-0006**



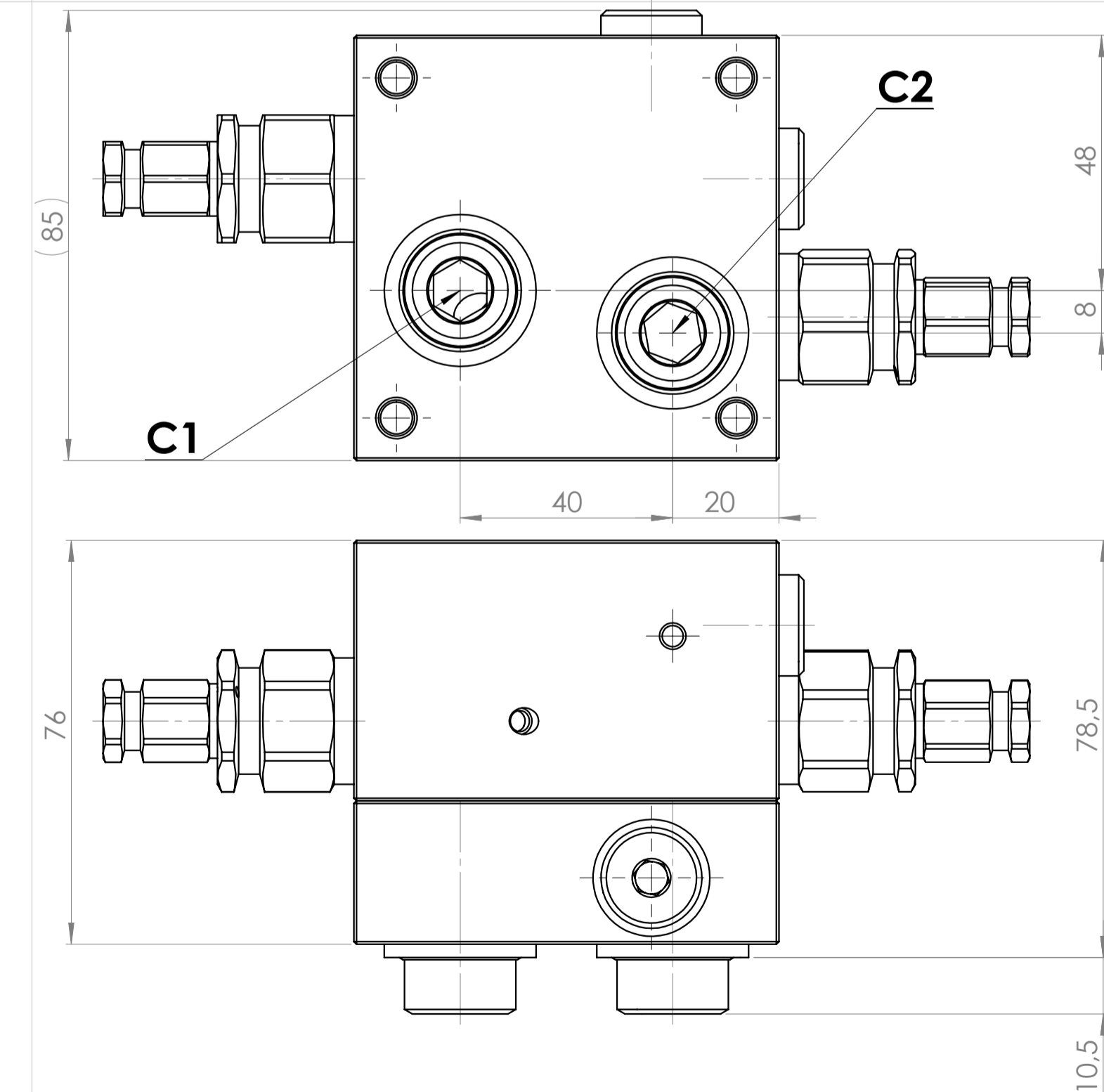
**FLANGIA MOTORI OIL DRIVE MGL/MGT
FLANGE OIL DRIVE MOTORS MGL/MGT**

**FPO 50 DV-O1-1/2-U-20/35-*
FP-09F-0007**



**FLANGIA MOTORI SAM IDRAULIK BG/AG/AR/BR
FLANGE SAM IDRAULIK MOTORS BG/AG/AR/BR**

**FPO 50 DV-S1-1/2-U-20/35-*
FP-09F-0008**



LM	DATA	DESCRIZIONE MODIFICA	FRMA	LM
FPO 50 DV-*-1/2-U-* GRUPPO: TRATTAMENTO TERMICO MATERIALE: CONTROLLATO FORMATO: PROTEZIONE SUPERFICIALE ALBINEA (RE) - ITALY		CODICE: FP-09F-0005/6/7/8 DISGNATO: SCALA: 1:1 DATA: 26/06/2009 DOCUMENTO RISERVATO A TERMINI DI LEGGE		