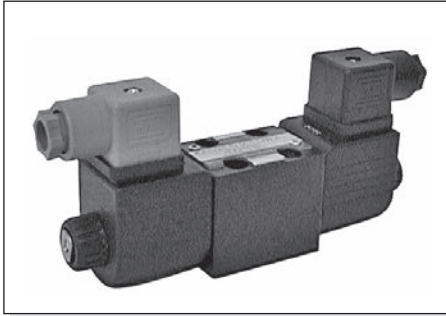


# AD2E... DIRECTIONAL CONTROL SOLENOID OPERATED VALVES CETOP 2/NG4

1

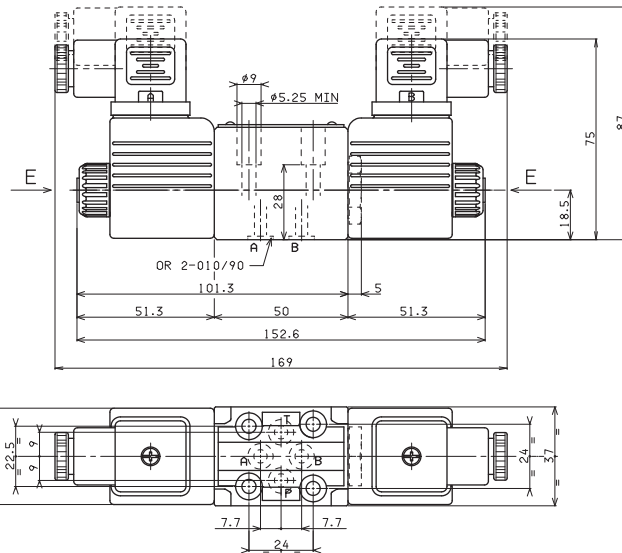
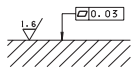


Max. pressure ports P/A/B	250 bar
Max pressure port T (dynamic)	250 bar
Max flow	20 l/min
Max excitation frequency	3 Hz
Duty cycle	100% ED
Fluid viscosity	10 ÷ 500 mm <sup>2</sup> /s
Fluid temperature	-25°C ÷ 75°C
Ambient temperature	-25°C ÷ 60°C
Max contamination level	class 10 in accordance with NAS 1638 with filter β <sub>25</sub> ≥ 75
Weight with one DC solenoid	0,88 Kg
Weight with two DC solenoids	1,1 Kg

E = Manual override

Screws with material specifications min. 8.8 recommended - UNI 5931  
Tightening torque of screws M5x35 = 5 Nm / 0.5 Kgm.

Support plane specifications

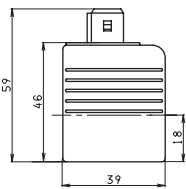


## DC COILS A09

Type of protection (in relation to connector used)	IP 65
Number of cycle	18.000/h
Supply tolerance	±10%
Ambient temperature	-30°C ÷ 60°C
Duty cycle	100% ED
Insulation class wire	H
Weight	0,215 Kg

• The AMP Junior coil, the Deutsch coil with bidirectional diode and the coil with flying leads (with or without diode) coils are available in 12V or 24V DC voltage only.

### AMP JUNIOR (AJ)

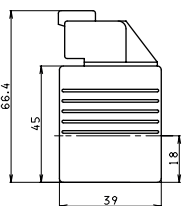


VOLTAGE (V)	MAX WINDING TEMPERATURE (AMBIENT TEMPERATURE 25°C)	RATED POWER (W)	RESISTANCE AT 20°C (OHM) ±7%
12V	123°C	27	5.3
24V	123°C	27	21.3
48V*	123°C	27	85.3
102V(**)**	123°C	27	392
110V(**)**	123°C	27	448
205V(**)**	123°C	27	1577

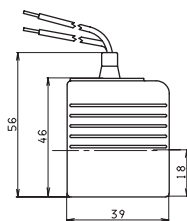
\* Special voltages

\*\* The european low voltage directive is applied to electrical equipments used at a nominal voltages between 50 and 1000 VAC or 75 and 1500 VDC. In conformity with the low directive each part of the manifold or the subplate on which the valve is mounted should be connected to a protective earth with a resistance less than 0.1 ohms.

### DEUTSCH COIL WITH BIDIR. DIODE (CX) DT04 - 2P

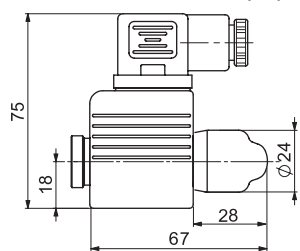


### FLYING LEADS (FL) LEADS WITH DIODE (LD)

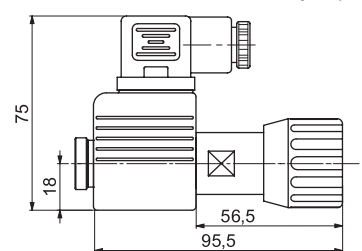


### EMERGENCY (COILS WITH HIRSCHMANN CONNECTION)

MANUAL WITHOUT CONNECTOR (ES)  
MANUAL WITH CONNECTOR (E1)



ROTARY WITHOUT CONNECTOR (P2\*)  
ROTAN ROTARY WITH CONNECTOR (P1\*)



(\*) Emergency tightening torque max. 6÷9 Nm / 0.6 ÷ 0.9 Kgm with CH n. 22