

XP.3... PROPORTIONAL PRESSURE CONTROL VALVES CETOP 3/NG6



XP.3...

REM.S.RA...

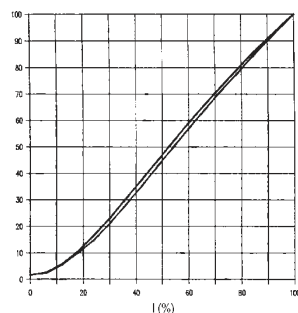
CH. IX PAGE 4

V.M.P... / V.M.L... / V.M.P.E... CH. II PAGE 6

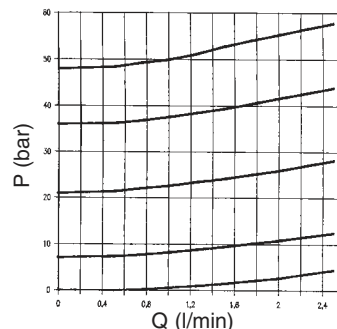
Proportional maximum pressure valves type XP.3.*.. are used to regulate a hydraulic circuit pressure by means of a variable electric signal. Their precise implementation allows for high and constant operational standard up to a maximum 2,5 l/min flow rate. A manually pressure limit setting version is also available, to protect the system from uncontrolled electrical signals.

• Other valves (e.g. subplate or in-line mounted valves) should be ordered separately.

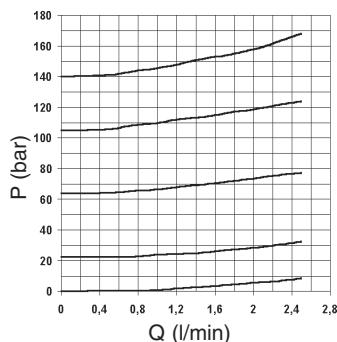
PRESSURE - SIGNAL
(tested with Q = 1 l/min)



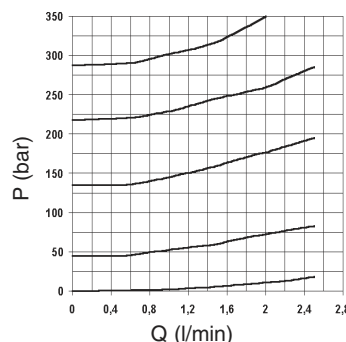
PRESSURE - FLOW RATE 1



PRESSURE - FLOW RATE 2



PRESSURE - FLOW RATE 3



ORDERING CODE

XP

Max. pressure valve

3

CETOP 3/NG6

*

1 = max. 50 bar
2 = max. 140 bar
3 = max. 320 bar

*

E = with manual limiter
S = without manual limiter

*

Voltage:
F = 12V DC
G = 24V DC

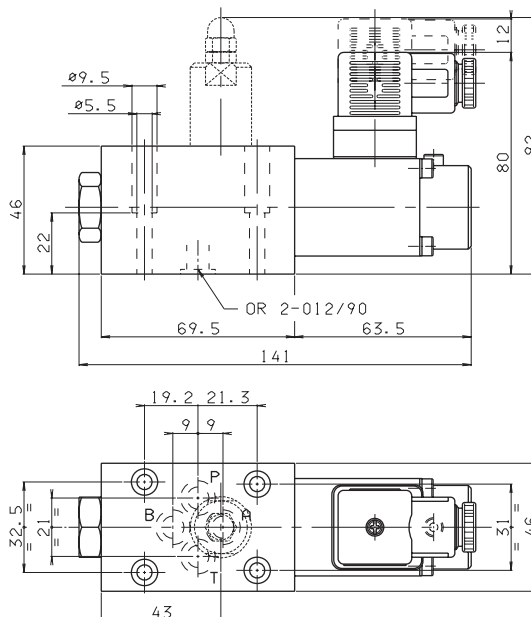
**

00 = No variant
V1 = Viton

1

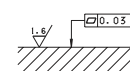
Serial No.

OVERALL DIMENSIONS



Fixing screws UNI 5931 M5x30
(min. 8.8 material screws are recommended)
Tightening torque $4 \div 5 \text{ Nm} / 0.4 \div 0.5 \text{ Kg}$

Support plane specifications



| | |
|--|--|
| Max. operating pressure (depending on the flow rate) | 350 bar |
| Max. flow | 2,5 l/min |
| Max. ambient temperature | 50° C |
| Linearity | See diagrams |
| Max. hysteresis | <3% of nominal value |
| Repeatability error (between 150 and 680 mA) | <2% |
| Resistance at 20°C (24V) | 24.6 Ohm |
| Resistance at 20°C (12V) | 7.2 Ohm |
| Max. resistance (ambient 20°C) (24V) at op. temp. | 31 Ohm |
| Max. resistance (ambient 20°C) (12V) at op. temp. | 9 Ohm |
| Max. current at (24V) | 0.68A |
| Max. current at (12V) | 1.25A |
| Type of protection | IEC 144 class IP 65 |
| Max. contamination level | class 8 in accordance with NAS 1638 with filter $\beta_{10} \geq 75$ |
| Fluid temperature | -20°C ÷ 75°C |
| Fluid viscosity | 10 ÷ 500 mm ² /s |
| Weight | 1,4 Kg |

• Operating specifications are valid for fluids with 33 mm²/s at 50°C, using specified ARON electronic control units.

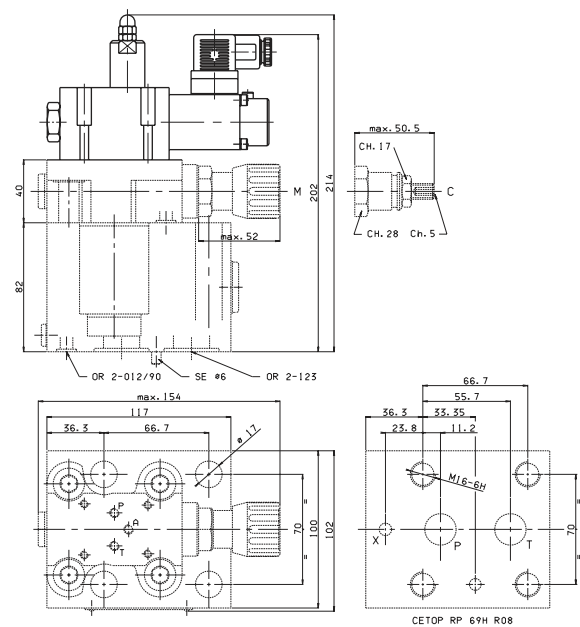
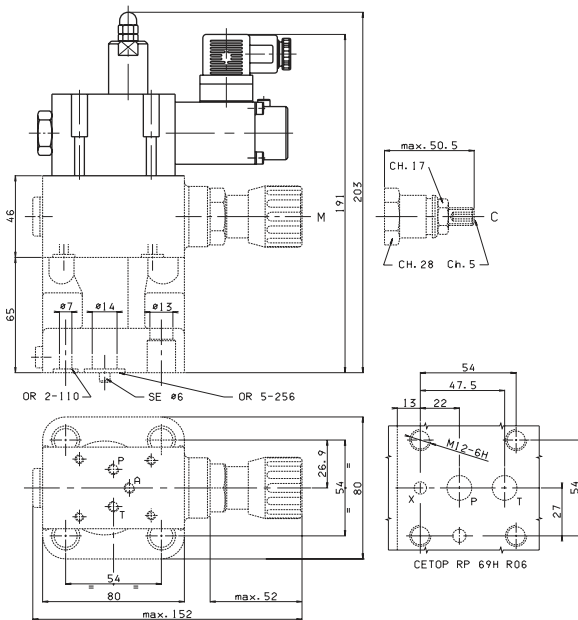
ELECTRONIC CONTROL UNITS

REM.S.RA.**

Card type control for single solenoid 12V and 24V

TYPICAL INSTALLATION XP.3... + VMP.E.16...

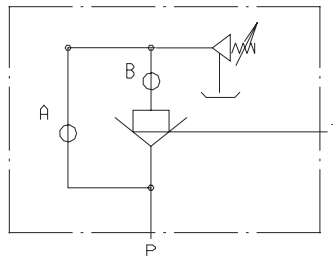
TYPICAL INSTALLATION XP.3... + VMP.E.25...



• WITH MOUNTING ON VMPE USE THE FOLLOWING CALIBRATED ORIFICES (SEE V.M.P.*.E VALVE AQ VARIANT)

VMP.E.16... A = Ø 1 mm
B = Ø 0,3 mm

VMP.E.25... A = Ø 1,2 mm
B = Ø 0,5 mm



AM.3.XMP... AMPLIFIER VALVES FOR PROPORTIONAL CONTROL VALVES



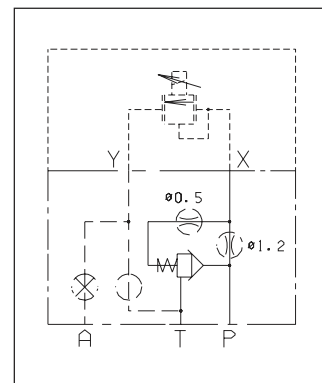
AM.3.XMP...

XP.3...

CH. VIII PAGE 18

| | |
|---|--|
| Max. operating pressure | 320 bar |
| Max. flow | 30 l/min |
| Min. flow | 2 l/min |
| Max. ambient temperature | 50° C |
| Linearity | See diagrams |
| Max. hysteresis | <3% of nominal value |
| Repeatability error (150 ÷ 680 mA) XP3... | <3% |
| Max contamination level | class 8 in accordance with NAS 1638 with filter β_{10}^{375} |
| Fluid temperature | -20°C÷75°C |
| Fluid viscosity | 10÷500 mm ² /s |
| Weight | 0,8 Kg |

Operating specifications are valid for fluids with 33 mm²/s viscosity at 40°C, using Aron control units

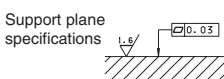
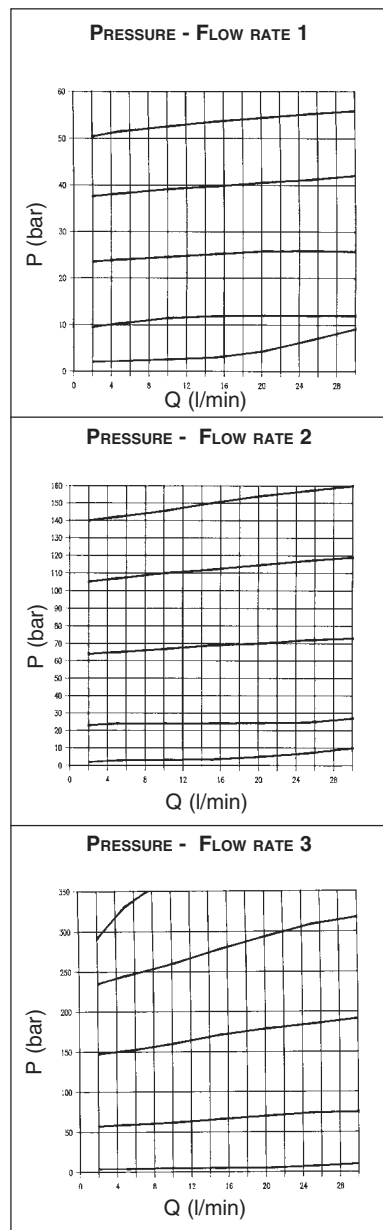
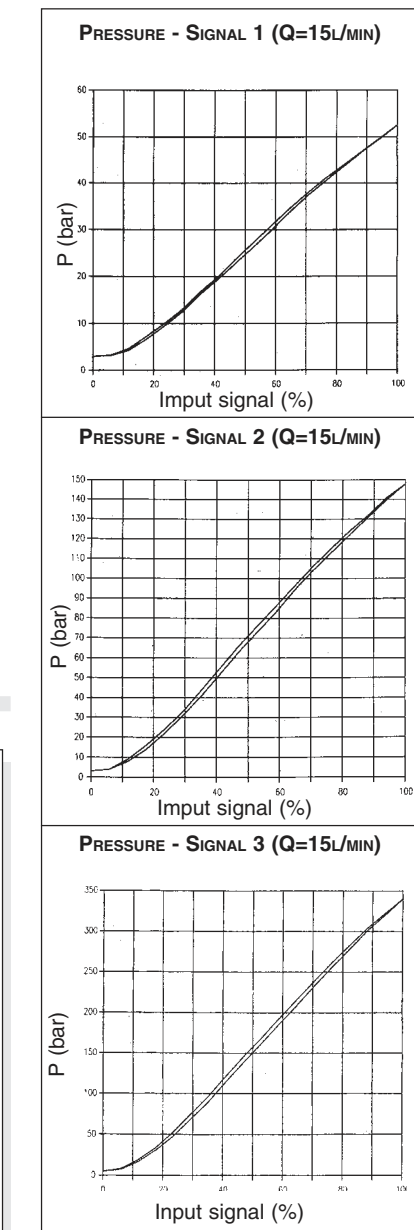
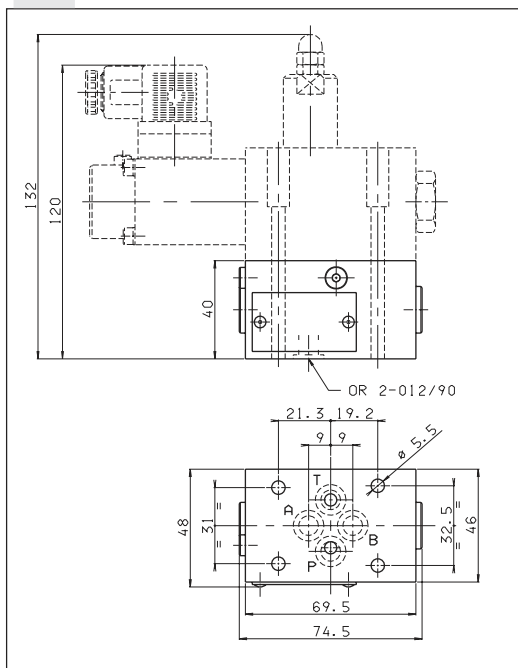


Modular valve type AM.3.XMP... used together with the pressure proportional pilot type XP.3.. becomes a pressure control valve piloted by proportional command for rates up to 30 lt/min. The possibility of external drainage on A ensures its correct operation even with back pressure on the discharge side. Other valves types should be ordered separately.

ORDERING CODE

- AM** Modular valve
- 3** CETOP 3/NG6
- XMP** maximum proportional pressure
- 2** Spring 2 bar (standard)
- 0** Standard dowels (Ø 1,2 dia supply Ø 0,5 dia damper)
- *** I = Internal drainage at T
E = External draining at A
- **** 00 =No variant
V1 =Viton
- 1** Serial No.

OVERALL DIMENSIONS



Fixing screws UNI 593 M5x70
(min. 8.8 material screws are recommended)
Tightening torque 4 ÷ 5 Nm / 0.4 ÷ 0.5 Kgm