

PVR3 / PVS3...

## PV\*3 / PV\*U3 PRESSURE REDUCING AND SEQUENCING VALVES CETOP 3/NG6

These subplate mounting piloted type pressure reducing and sequencing valves ensure a minimum variation in their calibrated pressure value with changing flow rate.

They are normally supplied with internal piloting and internal drainage on B, but they are already provided with a hole on the front cover to allow for external drainage.

They are available with two different types of adjustment and three calibrated ranges that cover pressure 7 ÷ 250 bar, with and without check valve.

The adjustment is carried out by means of a grub screw or a metric plastic knob.

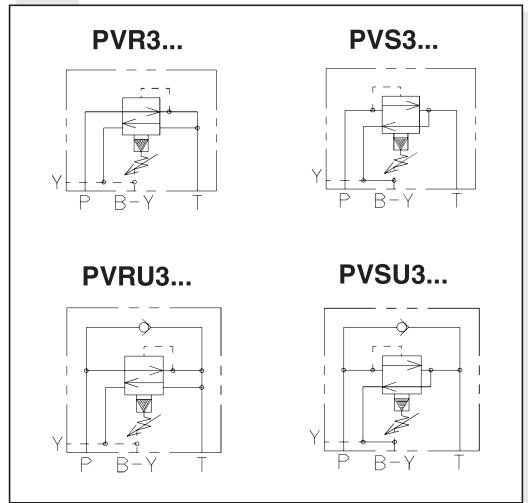
Max. pressure	320 bar
Setting ranges	Spring 1 max. 60 bar
	Spring 2 max. 120 bar
	Spring 3 max. 250 bar

Maximum allowed $\Delta p$ pressure between the inlet and outlet pressure (PVR only)	150 bar
Max. flow	40 l/min
Draining on port T	0.5 ÷ 0.7 l/min
Hydraulic fluids	Mineral oils DIN 51524
Fluid viscosity	10 ÷ 500 mm <sup>2</sup> /s
Fluid temperature	-25°C ÷ 75°C
Ambient temperature	-25°C ÷ 60°C
Max. contamination lever	class 10 in accordance with NAS 1638 with filter $\beta_{25} \geq 75$
Weight (without check valve)	1,5 Kg
Weight (with check valve)	2 Kg

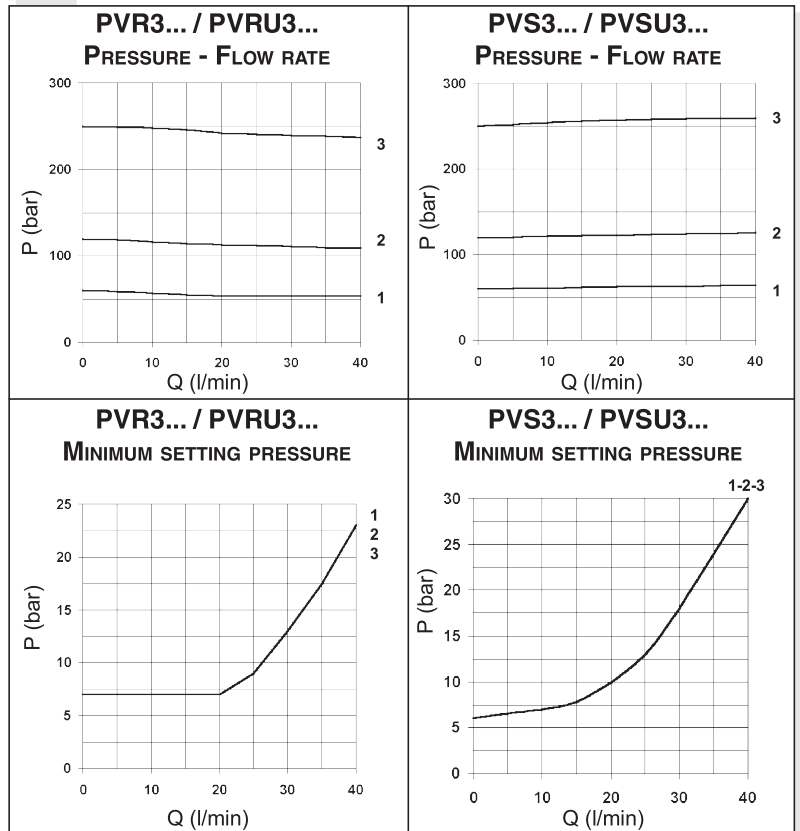
### ORDERING CODE

<b>PV*</b>	R = Reducing valve S = Sequencing valve
<b>U</b>	Check valve (omit if not required)
<b>3</b>	CETOP 3/NG6
<b>*</b>	Type of adjustment: M = Plastic knob C = Grub screw
<b>*</b>	Setting ranges 1 = max. 60 bar (white spring) 2 = max. 120 bar (yellow spring) 3 = max. 250 bar (green spring)
<b>**</b>	00 = No variant V1 = Viton
<b>1</b>	Serial No.

### HYDRAULIC SYMBOLS



### DIAGRAMS

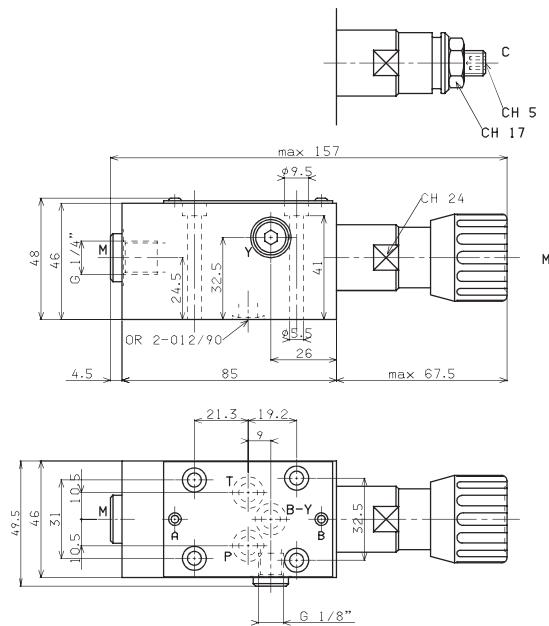


Curves n° 1 - 2 - 3 = setting ranges

The fluid used is a mineral oil with viscosity of 46 mm<sup>2</sup>/s at 40°C. The tests were carried out at a fluid temperature of 50°C.

OVERALL DIMENSIONS

REDUCING VALVE AND SEQUENCING VALVE PVR3... / PVS3... CETOP 3

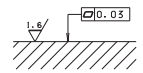


Type of adjustment

- M Plastic knob
- C Grub screw

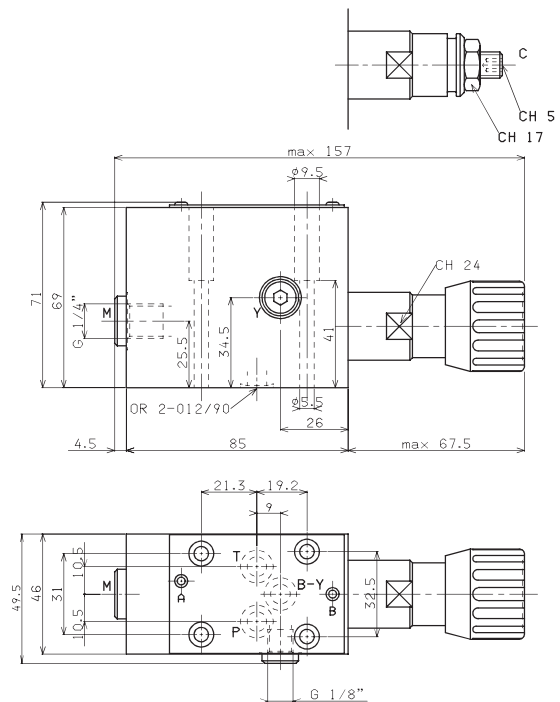
Fixing screws UNI 5931 M5x50  
with material specifications min. 8.8  
Tightening torque 5 Nm / 0.5 Kgm

Support plane specifications



OVERALL DIMENSIONS

REDUCING VALVE WITH CHECK VALVE AND SEQUENCING VALVE WITH CHECK VALVE PVRU3... / PVSU3... WITH CHECK VALVE CETOP 3

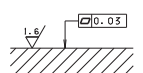


Type of adjustment

- M Plastic knob
- C Grub screw

Fixing screws UNI 5931 M5x50  
with material specifications min. 8.8  
Tightening torque 5 Nm / 0.5 Kgm

Support plane specifications





PVR5 / PVS5...

## PV\*3 / PV\*U3 PRESSURE REDUCING AND SEQUENCING VALVES CETOP 3/NG6

These subplate mounting piloted type pressure reducing and sequencing valves ensure a minimum variation in their calibrated pressure value with changing flow rate.

They are normally supplied with internal piloting and internal drainage on B, but they are already provided with a hole on the front cover to allow for external drainage.

They are available with two different types of adjustment and three calibrated ranges that cover pressure 7 ÷ 250 bar, with and without check valve.

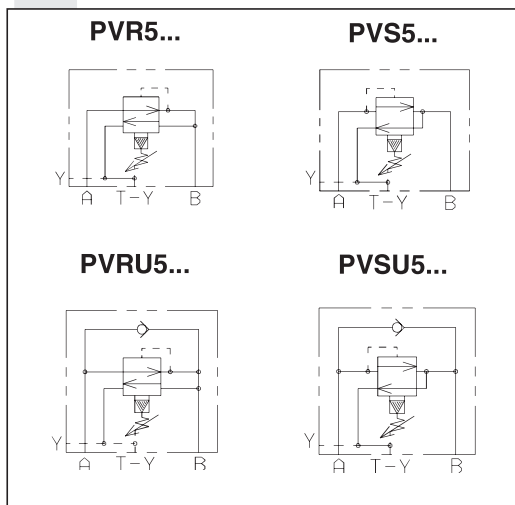
The adjustment is carried out by means of a grub screw or a metric plastic knob.

Max. pressure	320 bar	
Setting ranges	Spring 1	max. 60 bar
	Spring 2	max. 120 bar
	Spring 3	max. 250 bar
Maximum allowed $\Delta p$ pressure between the inlet and outlet pressure (PVR only)	150 bar	
Max. flow	40 l/min	
Draining on port T	0.5 ÷ 0.7 l/min	
Hydraulic fluids	Mineral oils DIN 51524	
Fluid viscosity	10 ÷ 500 mm <sup>2</sup> /s	
Fluid temperature	-25°C ÷ 75°C	
Ambient temperature	-25°C ÷ 60°C	
Max. contamination lever	class 10 in accordance with NAS 1638 with filter $\beta_{25} \geq 75$	
Weight (without check valve)	1,5 Kg	
Weight (with check valve)	2 Kg	

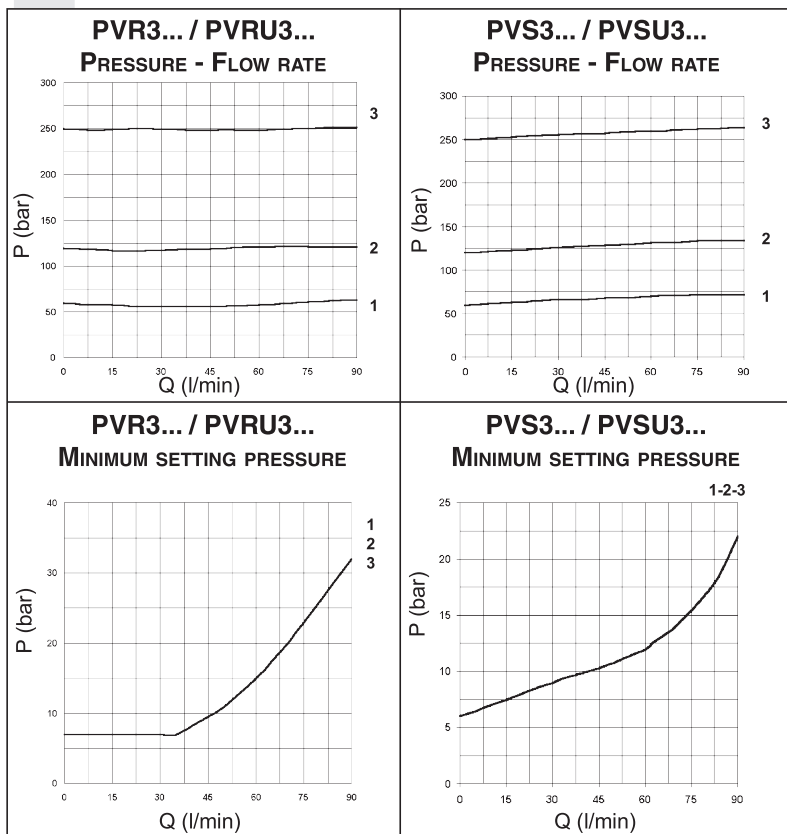
### ORDERING CODE

<b>PV*</b>	R = Reducing valve S = Sequencing valve
<b>U</b>	Check valve (omit if not required)
<b>3</b>	CETOP 3/NG6
<b>*</b>	Type of adjustment: M = Plastic knob C = Grub screw
<b>*</b>	Setting ranges 1 = max. 60 bar ( <b>white spring</b> ) 2 = max. 120 bar ( <b>yellow spring</b> ) 3 = max. 250 bar ( <b>green spring</b> )
<b>**</b>	00 = No variant V1 = Viton
<b>1</b>	Serial No.

### HYDRAULIC SYMBOLS



### DIAGRAMS

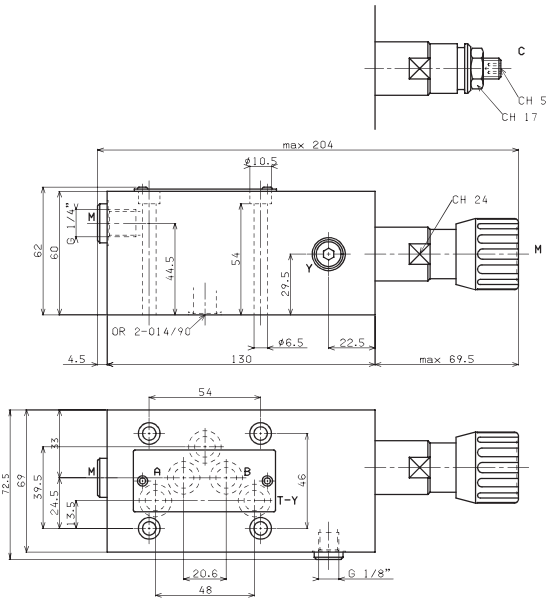


Curves n° 1 - 2 - 3 = setting ranges

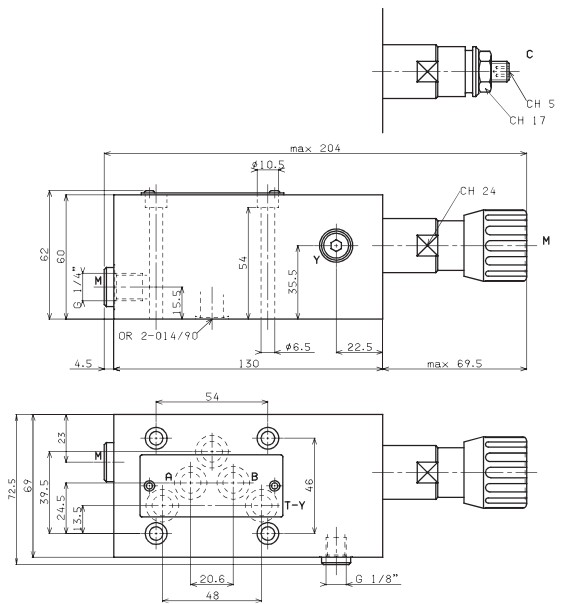
The fluid used is a mineral oil with viscosity of 46 mm<sup>2</sup>/s at 40°C. The tests were carried out at a fluid temperature of 50°C.

OVERALL DIMENSIONS

REDUCING VALVE  
PVR3... CETOP 3/NG6



SEQUENCING VALVE  
PVS3... CETOP 3/NG6

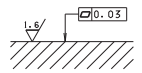


Type of adjustment

- M Plastic knob
- C Grub screw

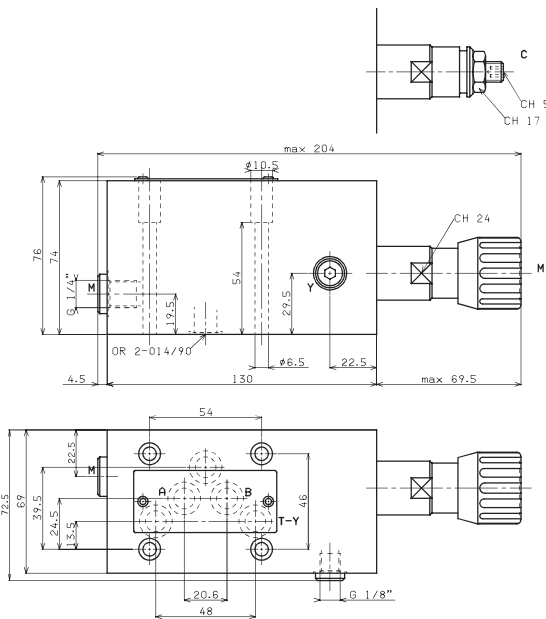
Fixing screws UNI 5931 M5x50  
with material specifications min. 8.8  
Tightening torque 5 Nm / 0.5 Kgm

Support plane  
specifications

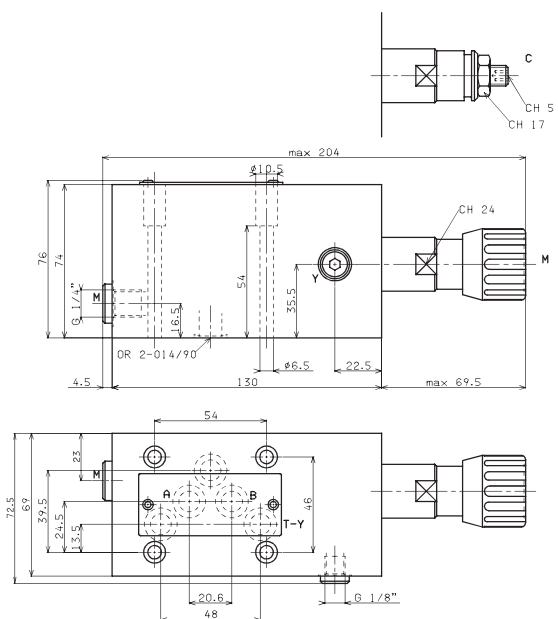


OVERALL DIMENSIONS

REDUCING VALVE WITH CHECK VALVE  
PVRU3... CETOP 3/NG6



SEQUENCING VALVE WITH CHECK VALVE  
PVSU3... CETOP 3/NG6



Type of adjustment

- M Plastic knob
- C Grub screw

Fixing screws UNI 5931 M5x50  
with material specifications min. 8.8  
Tightening torque 5 Nm / 0.5 Kgm

Support plane  
specifications

