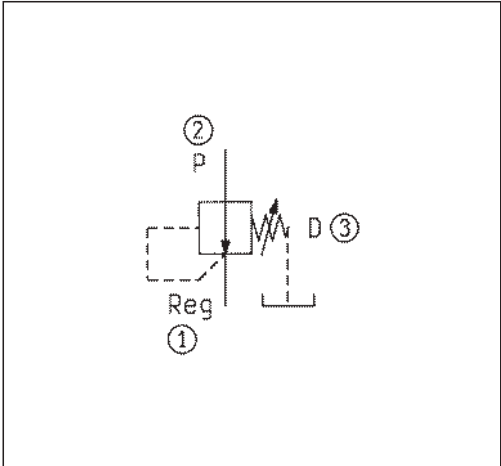
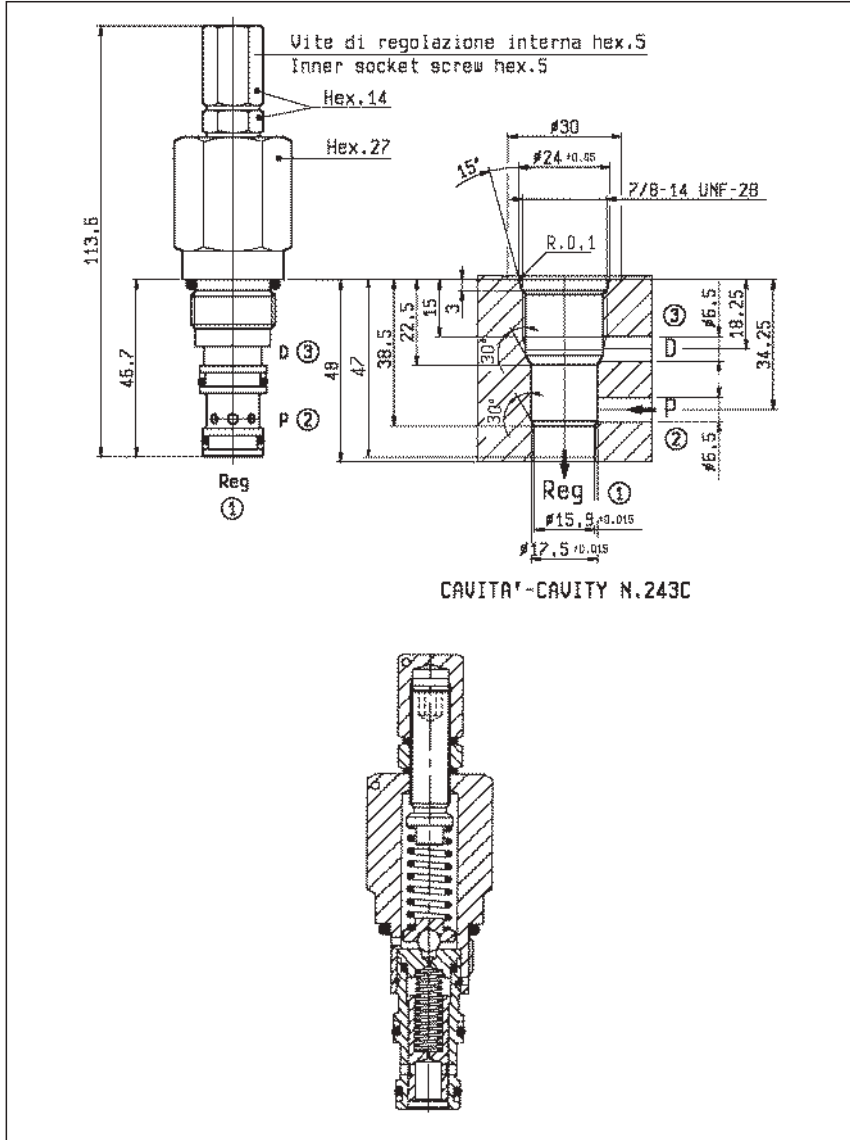
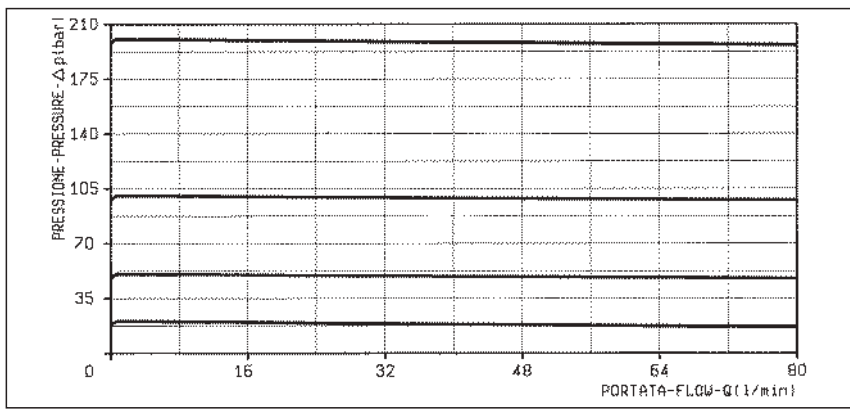


VRP-30

04.93.02 - X - Y - Z



DATI TECNICI / TECHNICAL DATA	
Coppia di serraggio Installation torque	64-72 Nm
Pressione di lavoro in entrata P max. Max. inlet pressure	250 bar
Pressione in uscita regolata max. Max. regulated pressure	210 bar
Portata max. Flow max.	80 l/min
Peso Weight	0.258 kg
Trafilamento: circa 0.003 l/min al 90% della pressione di taratura standard. Max leakage: 0.003 l/min at 90% of standard pressure setting.	
Classe di pulizia dell'olio: almeno 18/14 ISO 4406 (9 NAS-1638). Fluid cleanliness class: 18/14 ISO 4406 (9 NAS-1638) or better.	



X	REGOLAZIONI ADJUSTMENTS
03	vite interna esagono incassato leakproof inner hex. socket screw
04	volantino e controvolantino handknob and locknut

Z	MOLLE / SPRINGS				
	Campo taratura min - max bar Adj. press. range bar	Incremento press. bar / giro vite Press. increase bar / turn	Taratura standard bar (Q = 5 l/min) Std. setting bar (made at 5 l/min)	Cod. ordinazione Ordering code	Colore Colour
20	20-210	32	100	03.51.01.110	verde green

Y	ATTACCHI / PORT SIZE
99	Cartuccia/Cartridge