

VALVOLE ELETTRICHE 2 VIE UNIDIREZIONALI PILOTATE
2 WAY PILOT OPERATED ELECTRIC VALVE

PAGINA 1.50.08-1



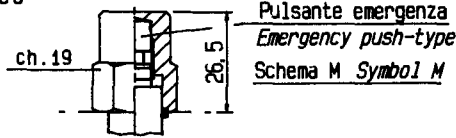
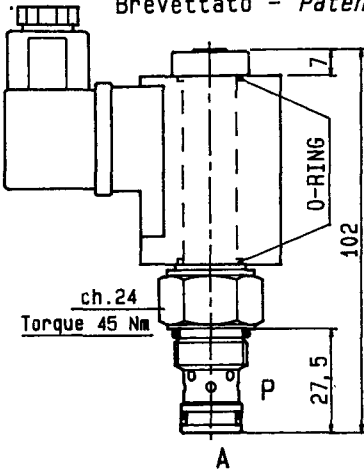
DENOMINAZIONE VALVOLA Valve denomination

Codice ordinazione Ordering code

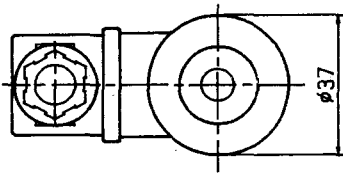
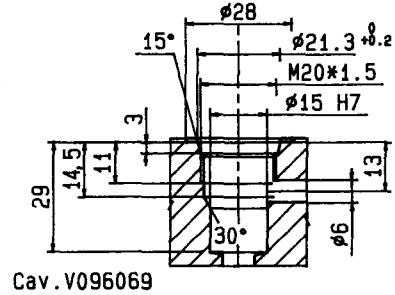
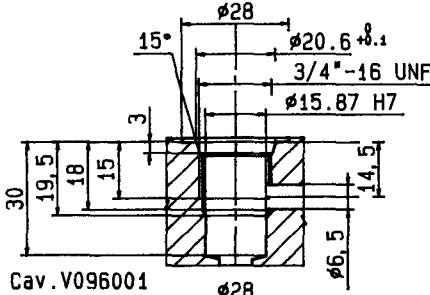
CEI6

V3.896.14.X.Y.0

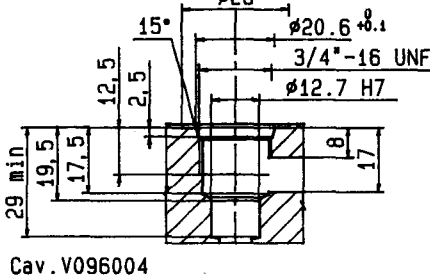
Brevettato - Patented



Per azionare l'emergenza svitare la ghiera, togliere il solenoide e riavvitare la ghiera.
In order to use to emergency button unscrew the lead, remove the coil and replace the lead.

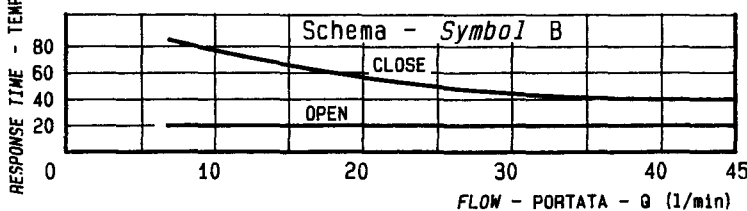
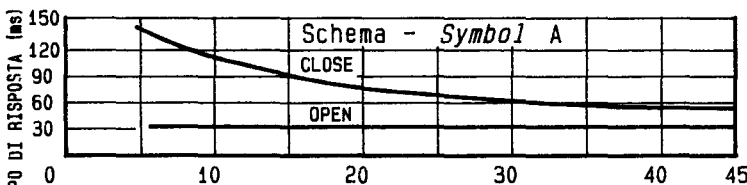
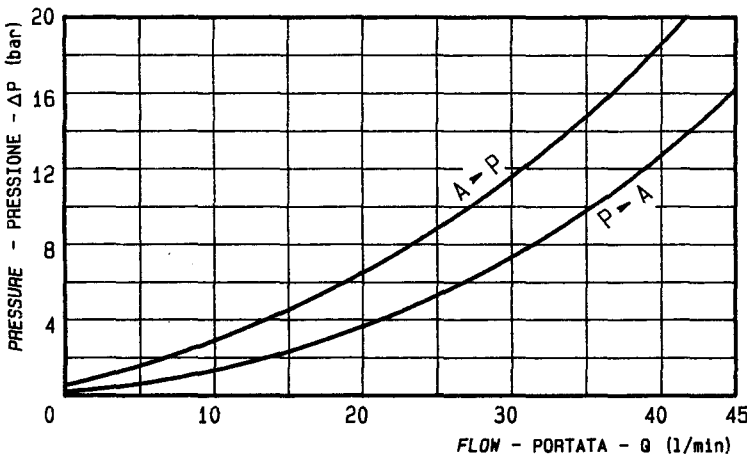


Solenoid S3-CEI
"S3-CEI" coil



- Filtraggio : 25 micron o inferiore
- Trafilamento : virtualmente nullo
- Vollaggio minimo richiesto : 90% della tensione nominale
- Il solenoide S3-CEI e' da ordinare separatamente.

- Filtration level: 25 micron or better
- Leakage: virtually zero
- Min.operating voltage: 90% of nominal
- Coils must be ordered separately.



X	SCHEMA SYMBOL	Funzioni possibili con solenoide : Operating features with solenoid :	
		diseccitato de-energized	eccitato energized
A		P → A A → P	P → A A → P
B		P → A A → P	P → A A → P
M		P → A A → P	P → A A → P

Y	CAVITA' / CAVITY	
	Filettatura / Thread	N°
1	3/4"-16 UNF	V096001
2	3/4"-16 UNF	V096004
4	M20x1.5	V096069

pressione di lavoro max.
max working pressure

portata max.
flow max

peso
weight

300 bar

45 l/min

kg. 0.13