

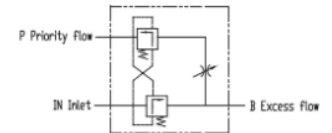
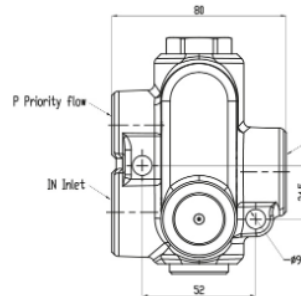
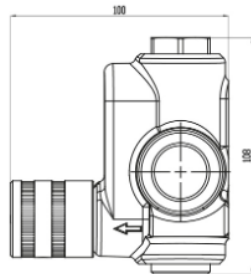
CC.080570

RF70P

Portata da 0 a 70 l/min

Entrata ed Uscita
(Scarico o Eccedente)
3/4" / SAE 12

Uscita Prioritaria 1/2"
BSP / SAE 10



SPECIFICHE TECNICHE / TECHNICAL SPECIFICATIONS

PORTATA MAX / MAX FLOW	80 L/min	21,13 GPM
PRESSIONE MAX SUGLI UTILIZZI / MAX PRESSURE ON PORTS	250 bar	3600 PSI

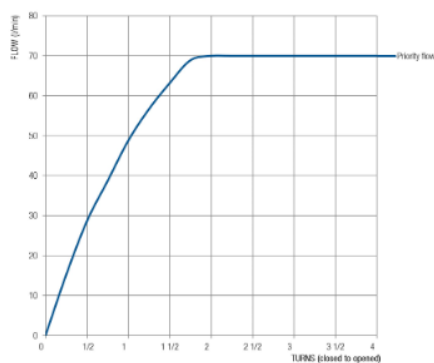
FILETTATURE STANDARD / STANDARD THREADS

	IN	P	B
G (BSP)	3/4"	1/2"	3/4"
F (UNF)	1,1/16"-12"	7/8"-14	1,1/16"-12"

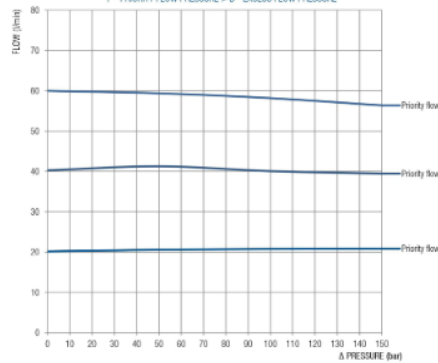
DIMENSIONI / DIMENSIONS

	L		I	
	mm	inch	mm	inch
RF70P	80	3,15	52	2,05

P - PRIORITY FLOW REGULATION



PRIORITY FLOW VARIATION RELATED TO Δ PRESSURE BETWEEN P AND B CIRCUITS P - PRIORITY FLOW PRESSURE > B - EXCESS FLOW PRESSURE



PRIORITY FLOW VARIATION RELATED TO Δ PRESSURE BETWEEN P AND B CIRCUITS B - EXCESS FLOW PRESSURE > P - PRIORITY FLOW PRESSURE

