

RW315KBUKP

PRODUCT FEATURE SUMMARY

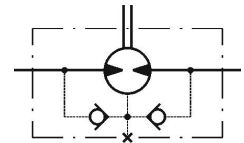
DATE: 10.12.2025

Username: Petar Petrov

MODEL TYPE: RW315KBUKP

CNSORDERNO (Order number)	RW315KBUKP
DC (Displacement code)	315: 315,7 cm ³ /rev [19.26 in ³ /rev]
SE (Shaft Extensions)	KB: ø35 tapered 1:10, Parallel key B6x6x20 DIN 6885
SSP (Shaft Seal Pressure)	UK: High pressure shaft seal with check valve
DP (Drain Port)	omit:with drain port
P (Ports)	omit: BSPP (ISO 228)
SFGWS (Special Features of gear wheel set)	omit: no special features
SFDR (Special Features – Direction of rotation)	omit: Standard
OP (Option (Paint))	P: Paint
INFO (Info)	PDF catalog
L (mm)	154.3
L1 (mm)	54.8

DATA SHEET



Type		
Displacement, cm³/rev [in³/rev]		315,7[19.26]
Max. Speed, [RPM]	cont.	240
	Int.*	285
Max. Torque, daNm [lb-in]	cont.	55 [4870]
	Int.*	69 [6100]
Max. Output, kW [HP]	cont.	9 [12]
	Int.*	10 [13.4]
Max. Pressure Drop, bar [PSI]	cont.	135 [1960]
	Int.*	175 [2540]
Max. Oil Flow, lpm [GPM]	cont.	75 [19,8]
	Int.*	90 [23.8]

Type		
Max. Inlet Pressure, bar [PSI]	cont.	175 [2540]
	Int.*	200 [2900]
	peak**	225 [3260]
Max. Return Pressure with Drain Line bar [PSI]	cont.	175 [2540]
	Int.*	200 [2900]
	peak**	225 [3260]
Pressure with Unloaded Shaft, bar [PSI]		5 [73]
Min Starting Torque, daNm [lb-in]	at max. press. drop cont.	50 [4425]
	at max. press. drop Int.*	66 [5840]
Min. Speed***, [RPM]		10
Weight, kg [lb]		11,8 [26]

* Intermittent operation: the permissible values may occur for max. 10% of every minute.

** Peak load: the permissible values may occur for max. 1% of every minute.

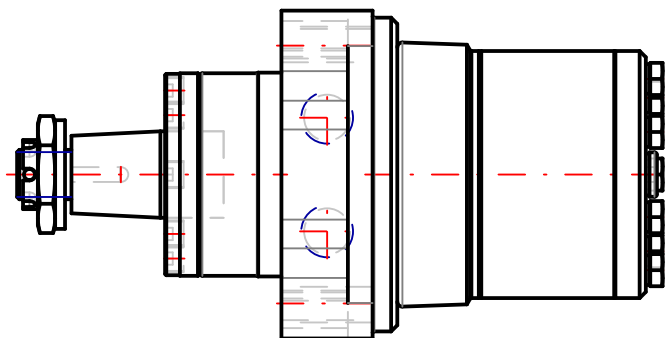
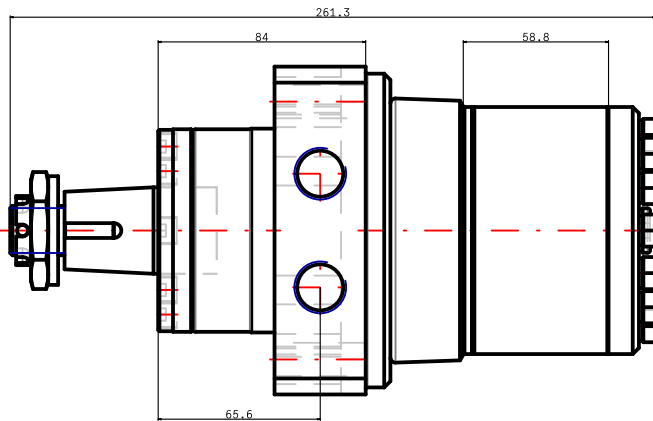
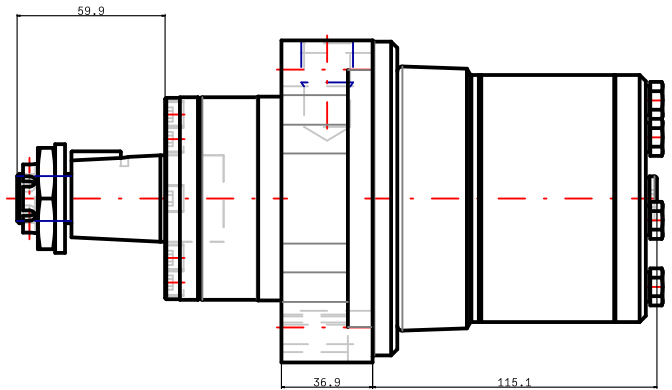
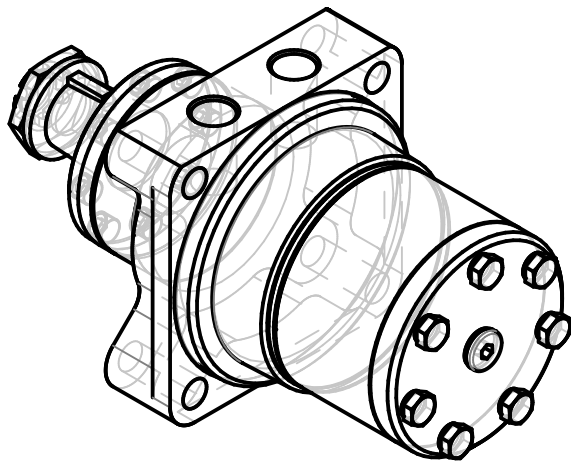
*** For speeds lower than given, consult factory or your regional manager.

- Intermittent speed and intermittent pressure drop must not occur simultaneously.
- Recommended filtration is per ISO cleanliness code 20/16. A nominal filtration of 25 micron or better.
- Recommend using a premium quality, anti-wear type mineral based hydraulic oil HLP(DIN51524) or HM (ISO 6743/4). If using synthetic fluids consult the factory for alternative seal materials.
- Recommended minimum oil viscosity 13 mm²/s [70 SUS] at 50°C [122°F].
- Recommended maximum system operating temperature is 82°C [180°F].
- To assure optimum motor life fill with fluid prior to loading and run at moderate load and speed for 10-15 minutes.

RW315KBUKP

3d generated view

To see model in 3D you should use Acrobat Reader with enable 3D view



NOTE: Shown dimensions are in nominal, for maximal values see table.

NOTE: For additional dimensions and information about flange , shaft , endcover , etc. see next page.

L max	LS max
154.3	

Confidential property of M+S Hydraulic, Bulgaria.
Please note that this drawing is automatically generated based on the selection. In case of possible changes or revisions in the drawing specifications, the selection process should be repeat. M+S is not responsible for any possible errors on the drawings.

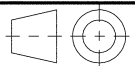


RW315KBUKP

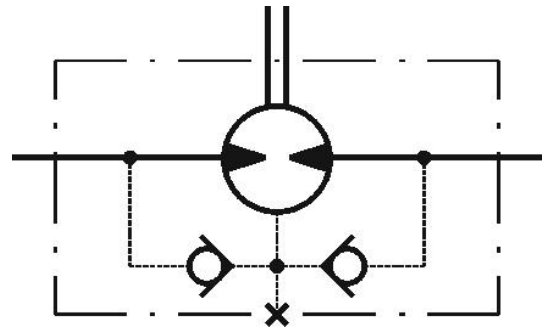
Design: M+S

Check:

Scale	Sheet	Rev.	Weight
Date 10.12.2025			11,8 [26]

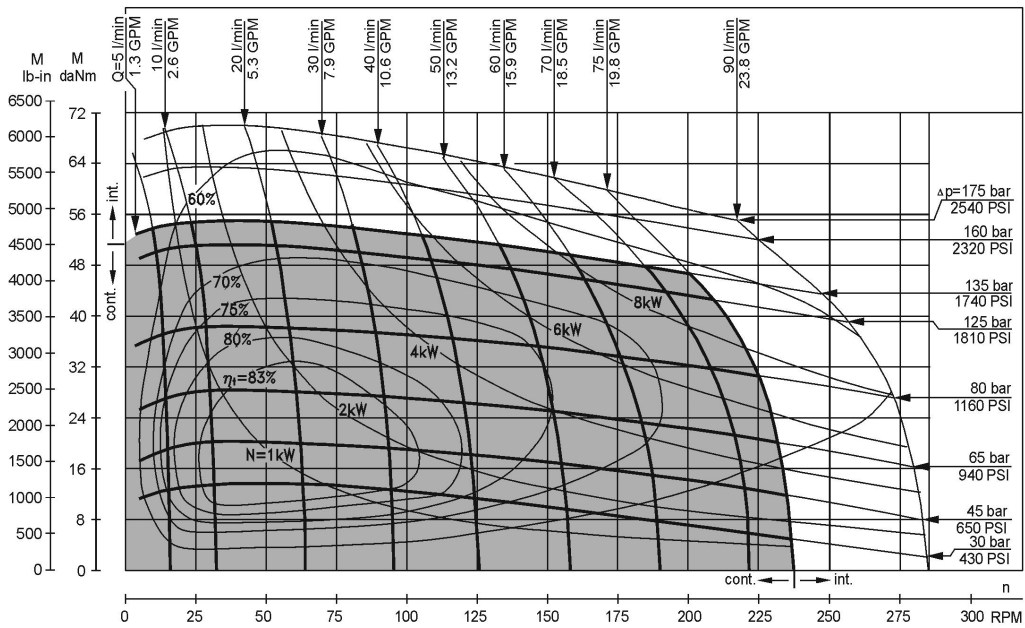


RW315KBUKP



The shaft seal pressure equals the pressure in the drain line.

FUNCTION DIAGRAMS

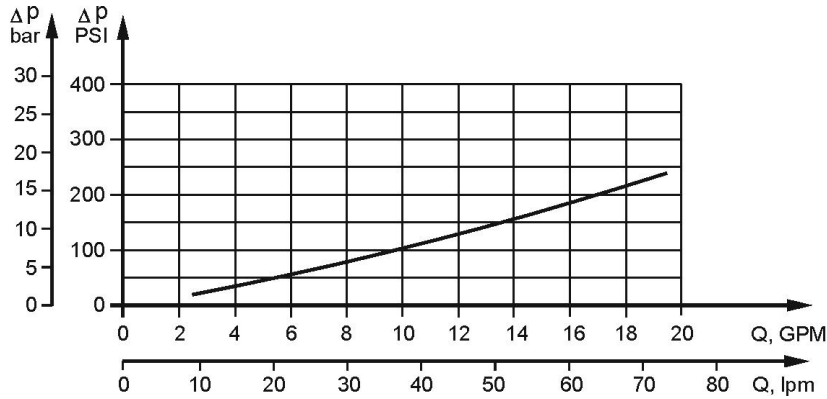


The function diagrams data is for average performance of randomly selected motors at back pressure 5÷10 bar [72.5÷145 PSI] and oil with viscosity of 32 mm²/s [150 SUS] at 50°C [122°F].

RW315KBUKP

DATA SHEET

Pressure Losses

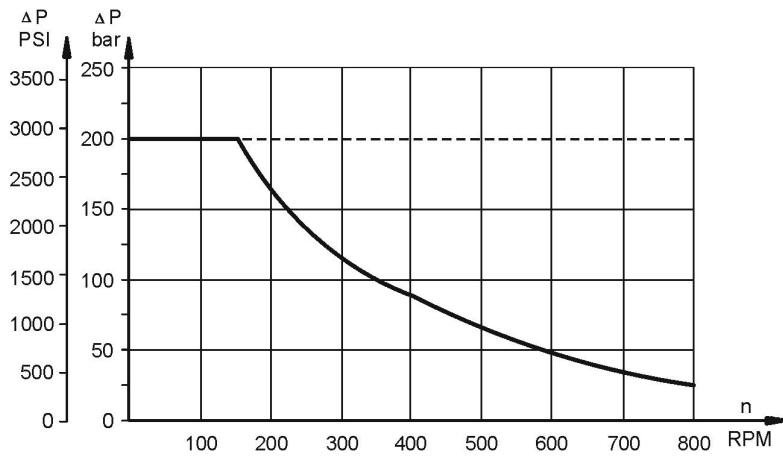


Oil flow in drain line

Pressure drop bar [PSI]	Viscosity mm ² /s [SUS]	Oil flow in drain line lpm [GPM]
100 [1450]	20 [98]	2,5 [.660]
	35 [164]	1,8 [.476]
140 [2030]	20 [98]	3,5 [.925]
	35 [164]	2,8 [.740]

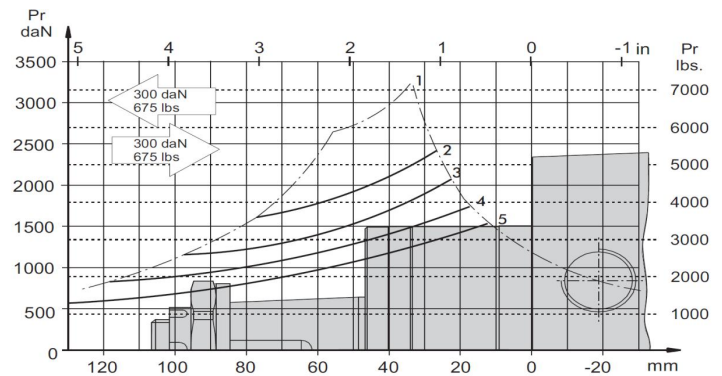
MAX: PERMISSIBLE SHAFT SEAL PRESSURE

Max. return pressure without drain line or max. pressure in the drain line



Black Curve shows continuous operations.
Dashed Curve shows intermittent operations.

PERMISSIBLE SHAFT LOADS



The curve applies to a B10 bearing life of 2000 hours. 1. Permissible radial shaft load 2. Drawing by n= 50 rpm 3. Drawing by n=100 4. Drawing by n=200 5. Drawing by n=400