

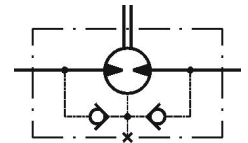
MSV125/4

PRODUCT FEATURE SUMMARY

DATE: 12.12.2025
MODEL TYPE: MSV125/4

Username: Petar Petrov

CNSORDERNO (Order number).	MSV125/4
MF (Mounting Flange).	V: Very short mount
PT (Port type).	omit: Side ports
DC (Displacement code).	125: 125,7 cm ³ /rev [7.67 in ³ /rev]
SE (Shaft Extensions).	omit: No shaft
SSV (Shaft Seal Version).	omit: No shaft
P (Ports).	omit: BSPP (ISO 228)
AD (Actuating Direction).	omit: only for drum brake
SFMS (Special Features measure speed).	omit: no special features
SFGWS (Special Features of gear wheel set).	omit: no special features
SFDR (Special Features – Direction of rotation).	omit: Standard
OP (Option (Paint)).	omit: no paint
DESIGNS (Design Series).	4
INFO (Info).	PDF catalog
L1 (mm).	21.8
L2 (mm).	77.8
L (max. Lmm).	96.2



DATA SHEET

Type	MS125
Displacement, cm³/rev [in³/rev]	125,7 [7.67]
Max. Speed, [RPM]	cont. 600
	Int.* 720
Max. Torque, daNm [lb-in]	cont. 37,5 [3320]
	Int.* 49 [4340]
Max. Output, kW [HP]	cont. 18 [24.1]
	Int.* 22,5 [30.2]
Max. Pressure Drop, bar [PSI]	cont. 210 [3050]
	Int.* 275 [3990]
Max. Oil Flow, lpm[GPM]	cont. 75 [20]
	Int.* 90 [24]

Type	MS125
Max. Inlet Pressure, bar [PSI]	cont. 230 [3340]
	Int.* 295 [4280]
	peak** 300 [4350]
Max. Return Pressure with Drain Line bar [PSI]	cont. 140 [2030]
	Int.* 175 [2540]
	peak** 210 [3050]
Pressure with Unloaded Shaft, bar [PSI]	
10 [145]	
Min Starting Torque, daNm [lb-in]	at max. press. drop cont. 29 [2570]
	at max. press. drop Int.* 38 [3360]
Min. Speed***, [RPM]	8
Weight, kg [lb]	6,3 [13.9]

* Intermittent operation: the permissible values may occur for max. 10% of every minute.

** Peak load: the permissible values may occur for max. 1% of every minute.

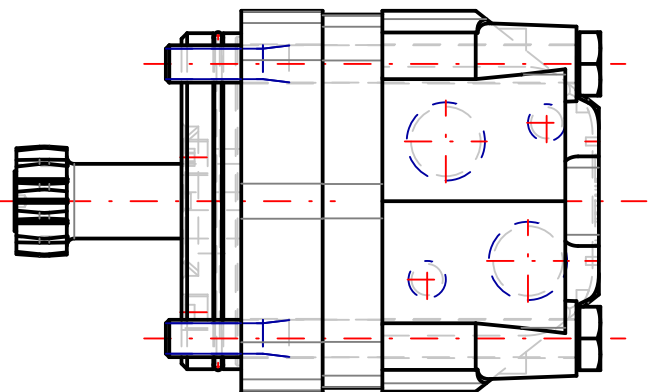
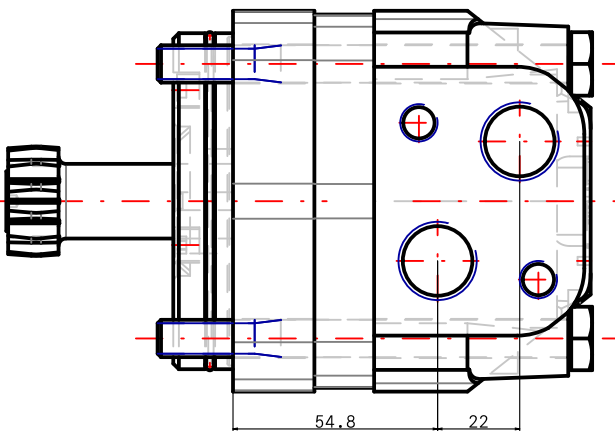
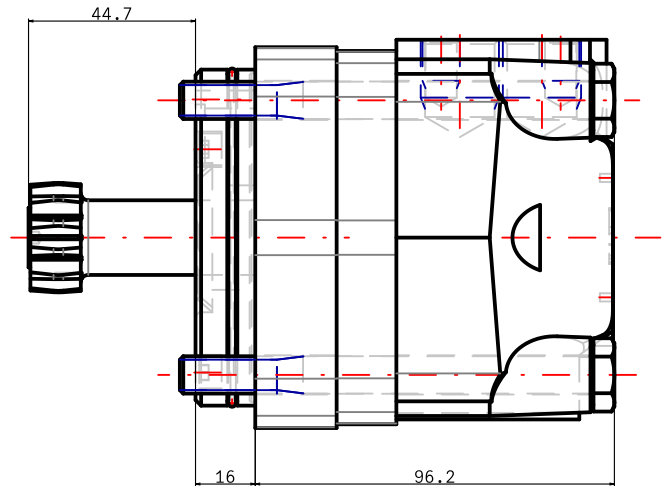
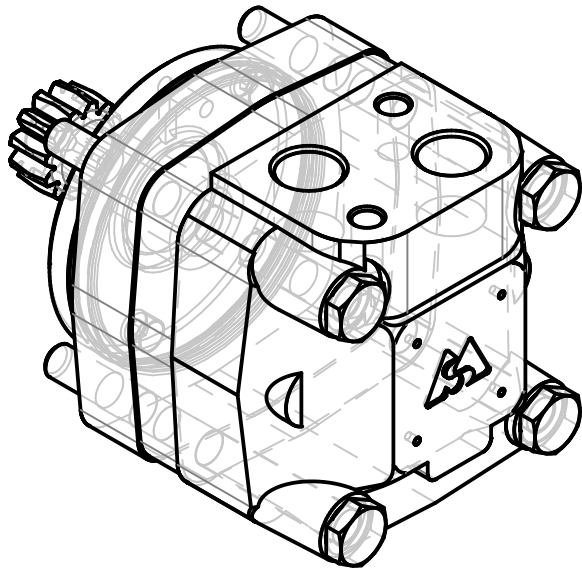
*** For speeds lower than given, consult factory or your regional manager.

- Intermittent speed and intermittent pressure drop must not occur simultaneously.
- Recommended filtration is per ISO cleanliness code 20/16. A nominal filtration of 25 micron or better.
- Recommend using a premium quality, anti-wear type mineral based hydraulic oil HLP(DIN51524) or HM (ISO 6743/4). If using synthetic fluids consult the factory for alternative seal materials.
- Recommended minimum oil viscosity 13 mm²/s [70 SUS] at 50°C [122°F].
- Recommended maximum system operating temperature is 82°C [180°F].
- To assure optimum motor life fill with fluid prior to loading and run at moderate load and speed for 10-15 minutes.

MSV125/4

3d generated view

To see model in 3D you should use Acrobat Reader with enable 3D view



NOTE: Shown dimensions are in nominal, for maximal values see table.

NOTE: For additional dimensions and information about flange , shaft , endcover , etc. see next page.

L max	LS max
96.2	77.8

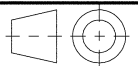
Confidential property of M+S Hydraulic, Bulgaria.
Please note that this drawing is automatically generated based on the selection. In case of possible changes or revisions in the drawing specifications, the selection process should be repeat. M+S is not responsible for any possible errors on the drawings.



MSV125/4

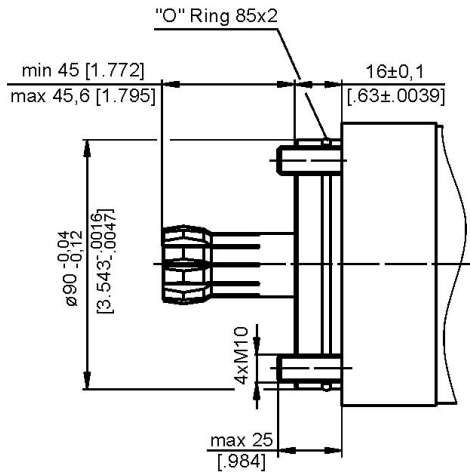
Design: M+S Check:

Scale	Sheet	Rev.	Weight
Date 12.12.2025		4	6.3 [13.9]

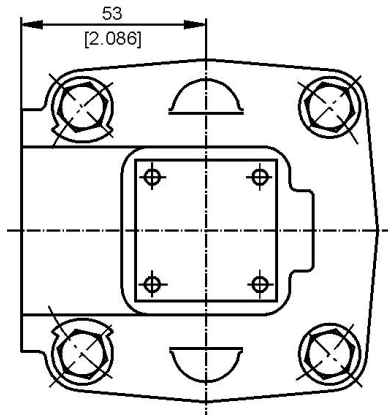
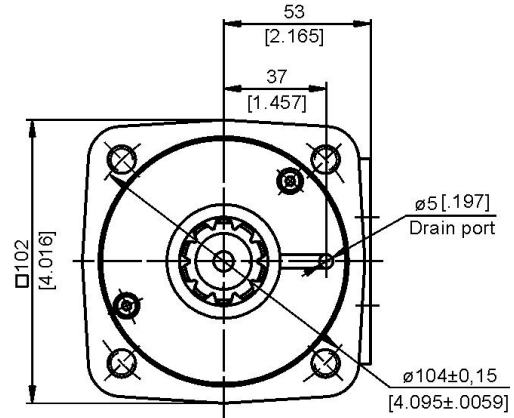


Standard Rotation
Viewed from Shaft End

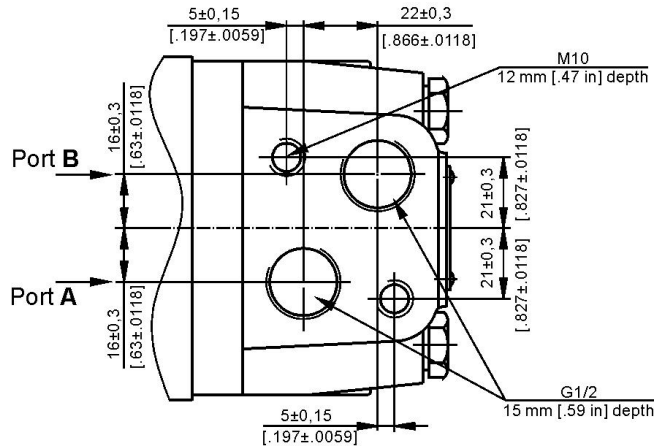
Port A Pressurized - CW
Port B Pressurized - CCW



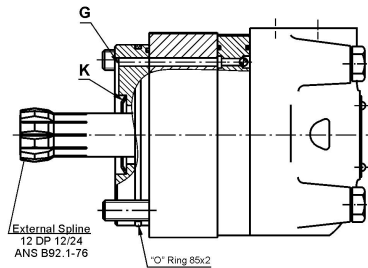
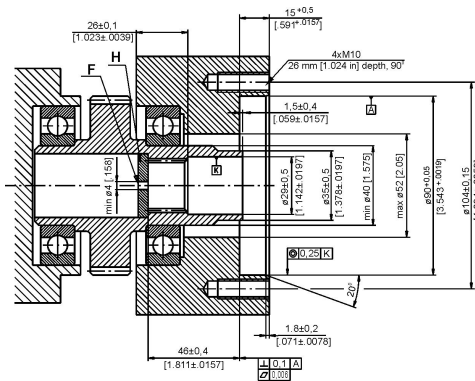
V: Very short mount



omit: Side ports



omit: No shaft



Confidential property of M+S Hydraulic, Bulgaria.
Please note that this drawing is automatically generated based on the selection. In case of possible changes or revisions in the drawing specifications, the selection process should be repeated. M+S is not responsible for any possible errors on the drawings.

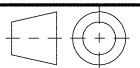


MSV125/4

Design: M+S

Check:

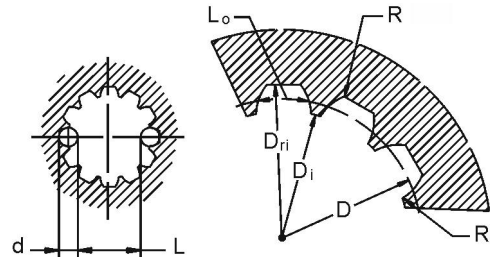
Scale	Sheet	Rev.	Weight
Date 12.12.2025		4	6,3 [13,9]



MSV125/4

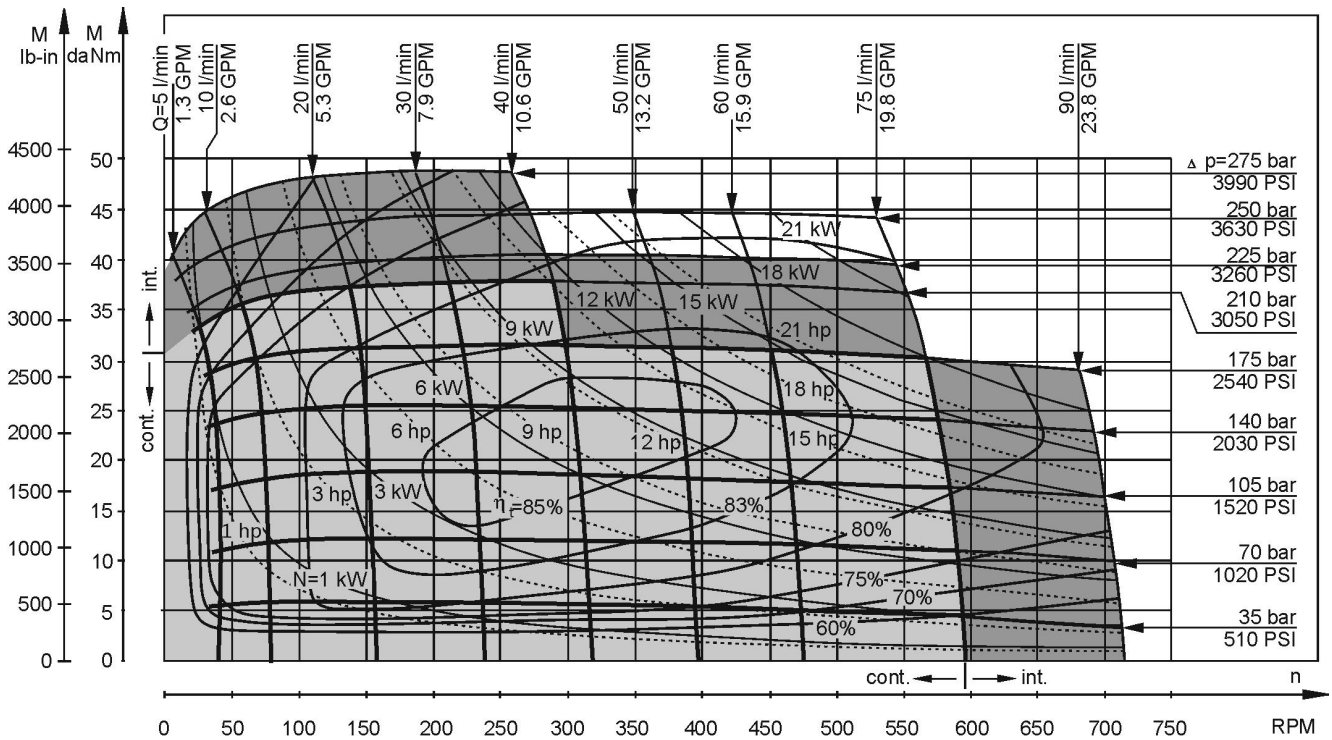
INTERNAL SPLINE DATA FOR THE ATTACHED COMPONENT Tolerances according standard **ANS B92.1-1976, class 5 [m=2.1166; corrected x.m=+0,8]**

Fillet Root Side Fit	mm	inch
Number of Teeth	z 12	12
Diametral Pitch	DP 12/24	12/24
Pressure Angle	30°	30°
Pitch Dia.	D 25,4	1
Major Dia.	D _{ri} 28,0-0,1	1.1 ± 1.098
Minor Dia.	D _i 23,0	.907 ± .905
Space Width [Circular]	L _o 4,308±0,020	.1704 ± .1688
Fillet Radius	R 0,2	.008
Max. Measurement between Pins	L 17,62	.699 ± .694
Pin Dia.	d 4,835±0,001	.19039±.19031



Hardening Specification: HV=750±50 on the surface HV=560 at 0,7±0,2 mm [.035±.019 in] case depth
Material: 20 MoCr4 EN 10084 or better

FUNCTION DIAGRAMS

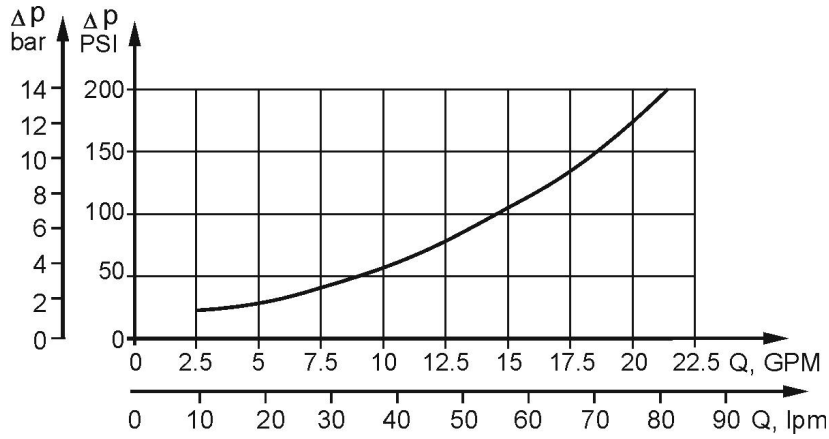


The function diagrams data is for average performance of randomly selected motors at back pressure 5±10 bar [72.5±145 PSI] and oil with viscosity of 32 mm²/s [150 SUS] at 50°C [122°F].

MSV125/4

DATA SHEET

Pressure Losses



Oil flow in drain line

Pressure drop bar [PSI]	Viscosity mm ² /s [SUS]	Oil flow in drain line lpm [GPM]
140 [2030]	20 [98]	1,5 [.396]
	35 [164]	1 [.264]
210 [3045]	20 [98]	3 [.793]
	35 [164]	2 [.528]

Max. return pressure without drain line or max. pressure in the drain line depending from customer machine