



AM2UP...

SCREWS AND STUDS

CAP. IV • 6

AM2UP... MODULAR PILOT OPERATED CHECK VALVES CETOP 2

AM.2.UP type modular check valves allow one way free flow by raising a conical shutter, while in the opposite direction the fluid can return by means of a small piston piloted by the pressure in the other line.

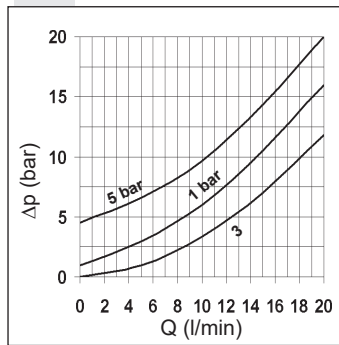
They are available on single A or B lines, and on double A and B lines (see hydraulic symbols).

Max. operating pressure	250 bar
Minimum opening pressure spring 1	1 bar
Minimum opening pressure spring 5	5 bar
Piloting ratio:	1:4
Max. flow	20 l/min
Hydraulic fluids	Mineral oils DIN 51524
Fluid viscosity	10 ÷ 500 mm ² /s a 50°C
Fluid temperature	-20°C ÷ 75°C
Max. contamination level	class 10 in accordance with NAS 1638 with filter $\beta_{25} \geq 75$
Weight	0,5 Kg

ORDERING CODE

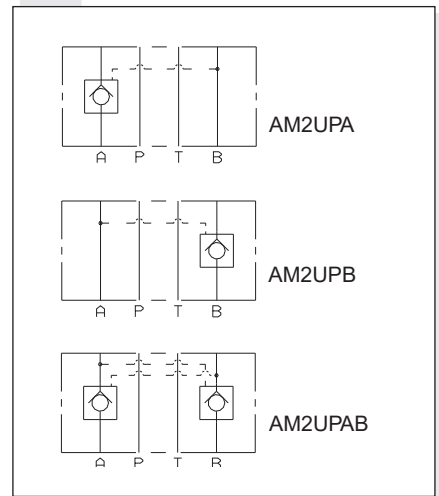
- AM** Modular valve
- 2** CETOP 2/NG4
- UP** Piloted check valve
- **** Control on lines **A / B / AB**
- *** Minimum opening pressure
1 = 1 bar
5 = 5 bar
- **** **00** = No variant
V1 = Viton
- 1** Serial No.

PRESSURE DROPS



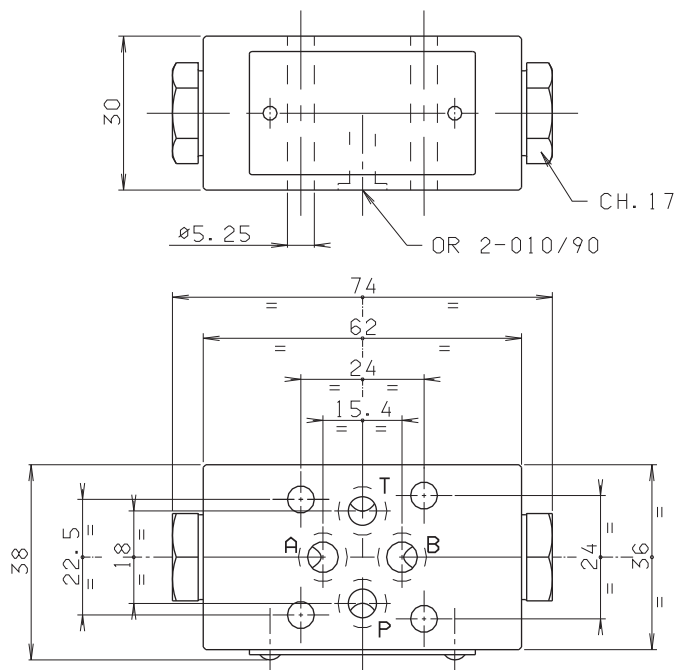
Curve n. 3 = Piloted side flow

HYDRAULIC SYMBOLS



4

OVERALL DIMENSIONS



Support plane specifications

