

DATI TECNICI

Materiali: corpo in ghisa
 cursore in acciaio
 pulsante in materia plastica
 targhetta in alluminio
 guarnizione in gomma nitrilica

Pressione max: 400 bar
 Temperatura: -30°C → +100°C
 Peso: 0,610 kg

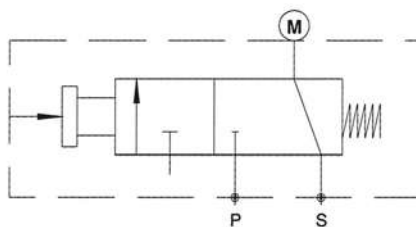
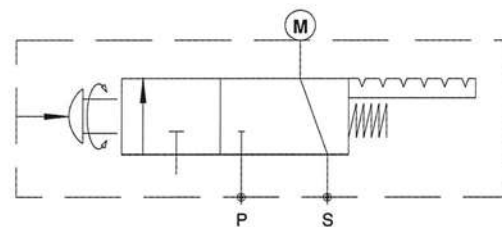
TECHNICAL DATA

Materials: cast iron body
 steel spool
 plastic button
 aluminium name plate
 nitrilic rubber seal

Max pressure: 400 bar
 Temperature range: -30°C → +100°C
 Weight: 0,610 kg

CODICE DI ORDINAZIONE / HOW TO ORDER

Serie Series		Tipo di azionamento Operation	
HB1	Esclusore 1 via Gauge isolator	PA	Pulsante a pressione / Attacco a vite Push button / Screw attachment
		PAF	Pulsante a pressione / Attacco a flangia Push button / Flange attachment
		RAF	Attacco a flangia / Selettore rotante Flange attachment / Rotary selector

SIMBOLOGIA / SIMBOLS

HB1-PA
HB1-PAF

HB1-RAF