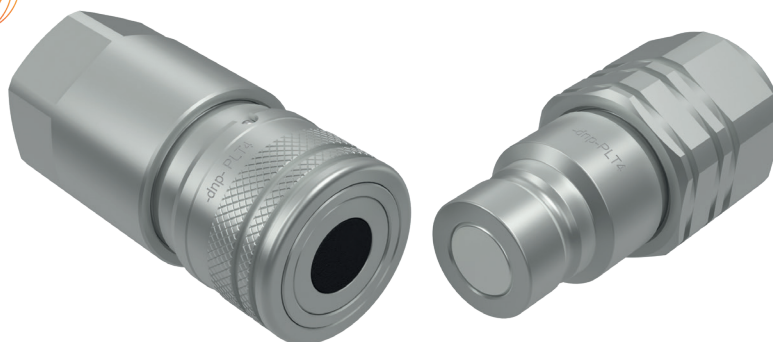


ISO 16028/350 BAR

VALVOLA PIANA/ACCIAIO
 FLAT FACE/STEEL
 FLACHDICHTEND/STAHL
 CLAPET PLAT/ACIER



Caratteristiche tecniche I

- Norma: ISO 16028 (DN06→DN30)
- Occlusione: faccia piana
- Aggancio: sfere radiali
- Materiale: acciaio
- Finitura: Zn-Fe (Cr III) e Zn-Ni
- Filettature: BSP-NPT-SAE-METRICHE
- Guarnizioni standard: NBR e PU
- Temperatura d'esercizio: -25°C+100°C
- Guarnizioni opzionali: FKM, EPDM o altro.
- Pressioni di esercizio: 350-500 bar
- Connessione in pressione residua: non consentita

Technical data E

- Standard: ISO 16028 (DN06→DN30)
- Occlusion: flat face
- Locking: radial balls
- Material: steel
- Finishing: Zn-Fe (Cr III) and Zn-Ni
- Threads: BSP-NPT-SAE-METRICS
- Standard seals: NBR and PU
- Working temperature: -25°C+100°C
- Optional seals: FKM, EPDM or more.
- Working pressure: 350-500 bar
- Connection under residual pressure: not allowed

Technische Merkmale D

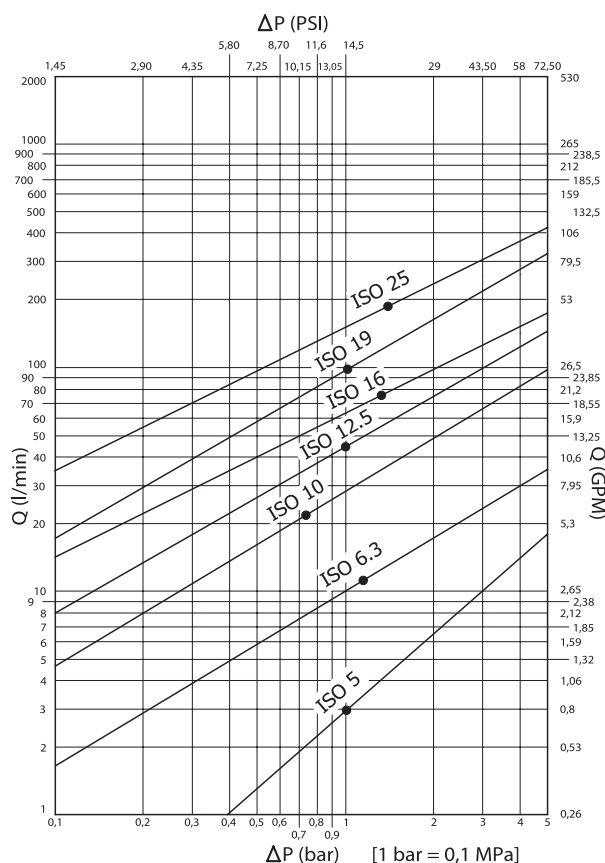
- Norm: ISO 16028 (DN06→DN30)
- Verschluss: flachdichtend
- Verriegelung: Stahlkugeln
- Werkstoff: Stahl
- Ausführung: Zn-Fe (Cr III) und Zn-Ni
- Gewinde: BSP-NPT-SAE-METRISCHE
- Standard-Dichtungen: NBR und PU
- Betriebstemperatur: -25°C+100°C
- Dichtungen nach Wahl: FKM, EPDM, usw.
- Betriebsdruck: 350-500 bar
- Kuppeln unter Restdruck: nicht möglich

Caractéristiques techniques F

- Norme: ISO 16028 (DN06→DN30)
- Obturation: clapet plat
- Accrochage: billes radiales
- Matériel: acier
- Traitement: Zn-Fe (Cr III) et Zn-Ni
- Taraudage: BSP-NPT-SAE-METRIQUES
- Joints standard: NBR et PU
- Température de service: -25°C+100°C
- Joints facultatifs: FKM, EPDM, ect.
- Pression de service: 350-500 bar
- Connexion sous pression résiduelle: pas possible

Nominal size	Max working pressure	Rated flow	Max flow rate	Min burst pressure			Fluid spillage			
				Male	Female	Coupled				
DNP	BG	ISO	mm	MPa	l/min	l/min	MPa	MPa	MPa	cc
04	0	5	4	50	3	9	250	210	250	0.006
06	1	6.3	6	40	12	24	190	190	190	0.008
13	2	10	8.6	35	23	46	150	170	160	0.010
20	3	12.5	10.7	35	45	90	170	150	170	0.012
22	4A	16	12.8	35	74	150	160	140	150	0.015
25	4	19	14.8	35	100	200	160	140	180	0.020
30	5	25	17.6	35	189	280	140	140	150	0.030

1 MPa = 145.04 psi • 1 l = 0.264 gal



PLT4 DN13 - BG 2 - ISO 10

THREADS	L2	L3	L4	ØT	F	STANDARD	FEMMINA - FEMALE - MUFFE - FEMELLE			MASCHIO - MALE - STECKER - MALE		
							COD. F	Weight (g)	Packaging (pcs)	COD. M	Weight (g)	Packaging (pcs)
AGS 3	88.5	73.5	26	08L	M14x1.5	ISO 8434-1-L	PLT4.1314.502	297	60	PLT4.1314.503	146	60
	88.5	73.5	26	10L	M16x1.5	ISO 8434-1-L	PLT4.1316.502	304	60	PLT4.1316.503	152	60
	88.5	73.5	26	12L	M18x1.5	ISO 8434-1-L	PLT4.1318.502	309	60	PLT4.1318.503	153	60
	98.5	83.5	36	12L	M18x1.5	ISO 8434-1-L	PLT4.1318.512	320	60	PLT4.1318.513	164	60
	89.5	74.5	27	15L	M22x1.5	ISO 8434-1-L	PLT4.1322.502	334	60	PLT4.1322.503	179	60
	89.5	74.5	27	18L	M26x1.5	ISO 8434-1-L	PLT4.1326.502	370	60	PLT4.1326.503	212	60
	89.5	74.5	27	10S	M18x1.5	ISO 8434-1-S	PLT4.1318.602	319	60	PLT4.1318.603	167	60
	89.5	74.5	27	12S	M20x1.5	ISO 8434-1-S	PLT4.1320.602	328	60	PLT4.1320.603	175	60
	91.5	76.5	29	14S	M22x1.5	DIN 3861	PLT4.1322.602	345	60	PLT4.1322.603	194	60
	91.5	76.5	29	16S	M24x1.5	ISO 8434-1-S	PLT4.1324.602	352	60	PLT4.1324.603	199	60
AG 5	77	62	12		BSP 3/8"	DIN 3852-2-B	PLT4.1310.212	293	60	PLT4.1310.213	136	60
	79.5	64.5	14		BSP 1/2"	DIN 3852-2-B	PLT4.1313.212	303	60	PLT4.1313.213	144	60
AG 7	76.5	61.5	14		NPT 3/8"	ANSI B1.20.1	PLT4.1310.022	289	60	PLT4.1310.023	143	60
AG 8	74	58.5	11		M16x1.5	DIN 7631	PLT4.1316.702	283	60	PLT4.1316.703	128	60
	78.5	63.5	16		M20x1.5	DIN 7631	PLT4.1320.702	293	60	PLT4.1320.703	141	60
	76.5	61.5	14		M22x1.5	DIN 7631	PLT4.1322.702	290	60	PLT4.1322.703	138	60

HF.017062 = PLT4.1318.502

HF.017064 = PLT4.1318.503

