

BS.5.R*A... SPECIAL SUBPLATE MOUNTINGS WITH AUTOMATIC EXCLUSION REGENERATING CIRCUIT



BS.5.RGA... / BS.5.RIA...

AD.5.1... CH. I PAGE 42

These special subplates, with relief valve, have integrated a regenerative circuit which disengages automatically with increasing load.

This circuit allows a fast movement of the cylinder with low working pressure followed by an automatic disengagement of the regenerative function at the set pressure, consequent a higher hydraulic force is available.

Furthermore in the BS.5.RIA version the automatic reciprocating valve allows a continuous movement of the cylinder till the stop of the pump.

The reciprocating valve has a preferential position which allows the cylinder to begin always in the same position at the start of the working cycle (P → B).

This systems are particularly useful for garbage compactors or small presses.

Max. pump flow (suggested)	30 l/min
Max. flow with regenerative connected	100 l/min
Max. operating pressure (relief valve)	350 bar
Max. operating pressure (exclusion)	200 bar
Hydraulic fluids	Mineral oils DIN 51524
Fluid viscosity	10 ÷ 500 mm ² /s
Fluid temperature	-25°C ÷ 75°C
Ambient temperature	-25°C ÷ 60°C
Max. contamination level	class 10 in accordance with NAS 1638 with filter $\beta_{0.5} \geq 75$
Weight BS.5.RGA... version	Kg 5,7
Weight BS.5.RIA... version	Kg 9,4

TYPICAL INSTALLATION VALUES

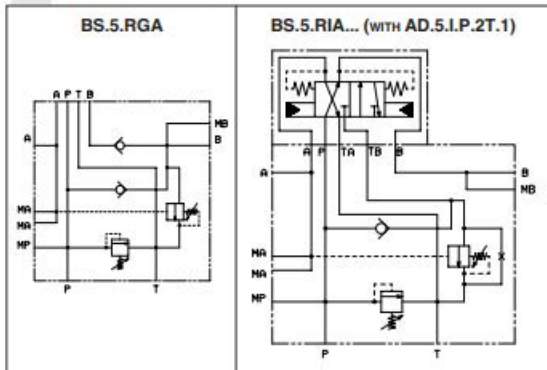
- Cylinder area ratio (α) 1,6 : 1
- Pump flow (QP) 30 l/min
- Type of oil 46 cSt @ 40°
- Regenerative flow (QR)
 - 80 l/min (for RGA standard subplate)
 - 75 l/min (for RIA standard subplate)
- Min. exclusion pressure setting 70 bar
- Max exclusion pressure setting 200 bar
- Exclusion pressure drops 6 bar

ORDERING CODE

BS	Single subplate mounting
5	CETOP 5/NG10
...	RGA = Automatic exclusion regenerating circuit with presetting for AD.5.E... RIA = Automatic exclusion regenerating circuit with AD.5.I.P.2T.1 included
U3	Exclusion range 20 ÷ 200 - see note (*)
*	Adjustment (relief valve) M = Plastic knob C = Grub screw
*	Max relief setting ranges 2 = max. 140 bar (yellow spring) 3 = max. 350 bar (green spring)
**	00 = No variant
2	Serial No

(*) These values depend on the hydraulic circuit configuration: flow, dimensions and system's frictions.

HYDRAULIC SYMBOLS



TYPICAL INSTALLATION FOR BS.5.RGA

